

Model 16-3

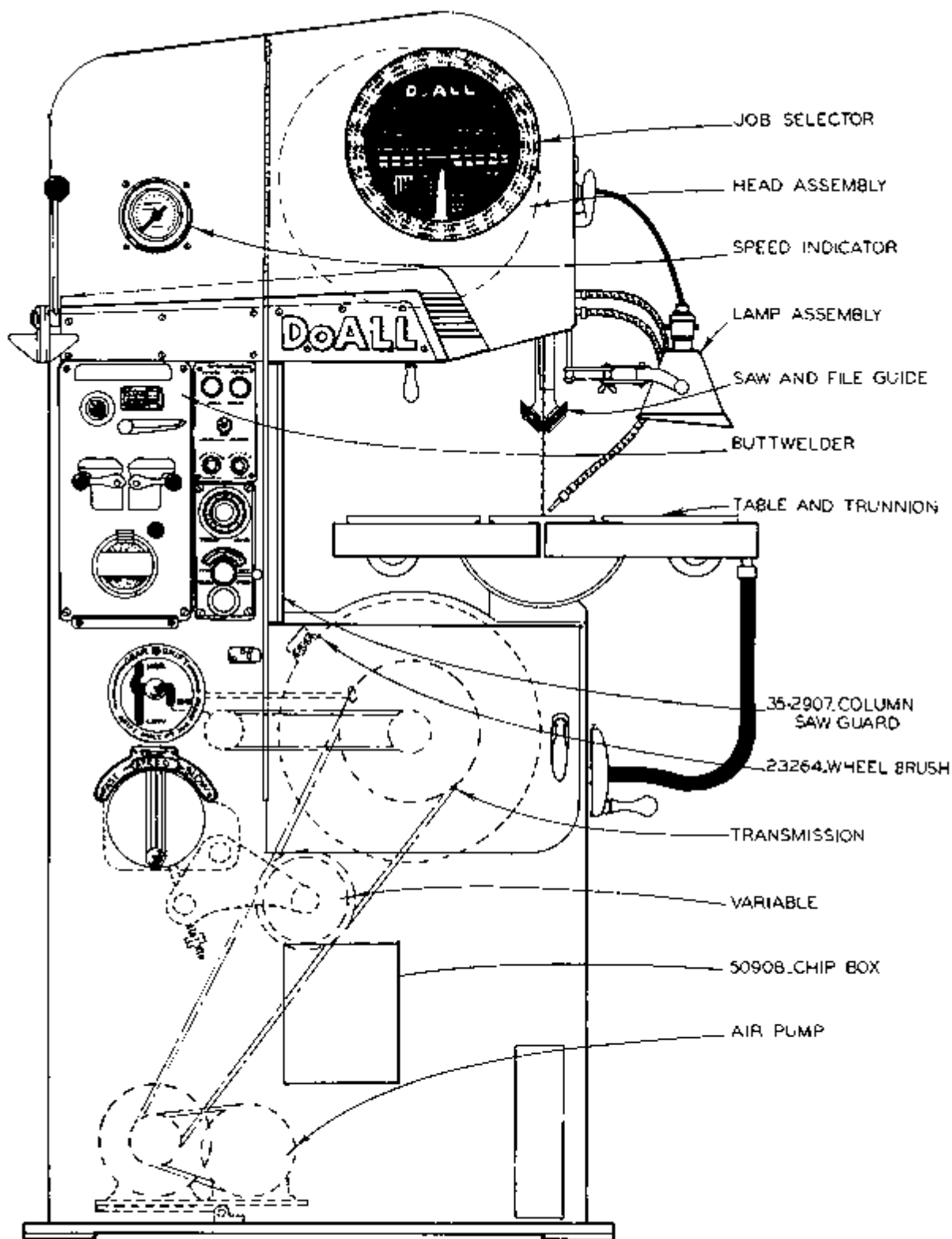
INDEX A-1

FICHE NO. B-3 CLASS Contour-Matic MODEL 16-3 SERIAL NO. 50-53101 TO 50-58854
SERIAL NO. 124-58101 TO 124-60324

PAGE NO.	DESCRIPTION	FIRST SERIAL	LAST SERIAL	FRAME NO.		FICHE NO.
				DWG.	P.LIST	
CM-1-2	Final Assembly	ALL		A-3	A-3	
CM-8-32	Air Pump	ALL		A-5	A-6	
CM-7-25	Band Filing	ALL		A-7	A-8	
CM-7-25	Band Polishing	ALL		A-7	A-8	
CM-2-1	Band Tensioning Mechanism	50-53101	to 53-55359	C-1&2	C-1&2	
CM-2-10	Band Tensioning Mechanism	50-55360	to END	C-3&4	C-3&4	
CM-2-2	Band Tensioning Mechanism	124-58101	to END	C-5&6	C-5&6	
HI-1920	Blade Shear	See Butt welder		F-9	F-10	H-2
CM-1-2	Chip Brush	ALL		A-3	A-3	
CM-3-53	Contour Attachment	50-53101	to END	A-11&12	A-11&12	
CM-3-54	Contour Attachment	124-58101	to END	A-13	A-14	
CM-8-5	Coolant & Air System	50-53101	to END	B-1	B-1	
CM-8-6	Coolant & Air System	124-58101	to END	B-2	B-2	
CM-8-16	Coolant Pump	ALL		B-3	B-4	
CM-9-1	Disc Cutter	ALL		B-5	B-6	
CM-1-53	Door Latches	ALL		B-7&8	B-7&8	
CM-5-8	Drive	50-53101	to END	B-9	B-9	
CM-5-9	Drive	124-58101	to END	B-10	B-10	
HI-20.0	Etching Pencil	See Butt welder		F-11	F-12	H-2
CM-9-15	Foot Switch	ALL		B-13	B-14	
CM-2-1	Head	50-53101	to 50-55359	C-1&2	C-1&2	
CM-2-10	Head	50-55360	to END	C-3&4	C-3&4	
CM-2-2	Head	124-58101	to END	C-5&6	C-5&6	
	Heavy Work Clamps	See Parallel Work Clamp				
CM-4-53	Hydraulic System	50-53101	to 50-55370	C-7&8	C-7&8	
CM-4-54	Hydraulic System	50-55371	to END	C-9	C-9	
CM-4-55	Hydraulic System	124-58101	to END	C-10	C-10	
CM-5-8	Input Pulley	50-53101	to END	B-9	B-9	
CM-5-9	Input Pulley	124-58101	to END	B-10	B-10	
CM-8-53	Job Selector	ALL		C-11	C-12	
CM-8-27	Lamp	50-53101	to END	C-13	C-13	
CM-8-28	Lamp	124-58101	to END	C-14	C-14	
CM-9-3	Magnifier	ALL		D-1	D-2	
CM-4-55	Oil Filter	124-58101	to END	C-10	C-10	
CM-4-53	Oil Pump, Hyd.	50-53101	to 50-55370	C-7&8	C-7&8	
CM-4-54	Oil Pump, Hyd.	50-55371	to END	C-9	C-9	
CM-4-55	Oil Pump, Hyd.	124-58101	to END	C-10	C-10	
CM-10-13	Parallel Work Clamp, Heavy	ALL		D-3&4	D-3&4	
CM-10-7	Protractor Work Stop & Alignment Gage	ALL		D-5	D-6	
CM-9-7	Ratchet Table Feed	ALL		D-7	D-8	
CM-7-6	Saw Guide Selection, Insert Type	ALL		D-9	D-9	
CM-7-9	Saw Guide Selection, Insert & Roller	ALL		D-10	D-10	
CM-7-23	Saw Guide Selection, Insert Type 1 of 2	ALL		D-11	D-12	
CM-7-29	Saw Guide Selection, Insert Type 2 of 2	ALL		D-13	D-14	
CM-7-27	Saw Guide Selection, Roller Type	ALL		E-1	E-2	
CM-4-4	Shift Mechanism	ALL		E-7&8	E-7&8	
CM-5-8	Speed Change Mechanism	50-53101	to END	B-9	B-9	
CM-5-9	Speed Change Mechanism	124-58101	to END	B-10	B-10	
CM-5-51	Speed Indicator	50-53101	to END	E-3	E-3	
CM-5-52	Speed Indicator	124-58101	to END	E-4	E-4	
CM-3-4	Table	50-53101	to END	E-5	E-5	
CM-3-5	Table	124-58101	to END	E-6	E-6	

FICHE NO. B-3 CLASS CONTOUR-MATIC MODEL 16-3 SERIAL NO. 50-53101 TO 50-58854
 SERIAL NO. 124-58101 TO 124-60324

PAGE NO.	DESCRIPTION	FIRST SERIAL	LAST SERIAL	FRAME NO.		FICHE NO.
				DWG.	P.LIST	
CM-4-53	Table Cylinder	50-53101	to 50-53370	C-7&8	C-7&8	
CM-4-54	Table Cylinder	50-53371	to END	C-9	C-9	
CM-4-55	Table Cylinder	124-58101	to END	C-10	C-10	
CM-4-4	Transmission	ALL		E-7&8	E-7&8	
CM-10-9	Universal Cal. Work Fixture	ALL		E-9	E-10	
CM-10-1	Universal Vise	ALL		E-11	E-12	
CM-4-53	Valve, Table Control	50-53101	to 50-53370	C-7&8	C-7&8	
CM-4-54	Valve, Table Control	50-53371	to END	C-9	C-9	
CM-4-55	Valve, Table Control	124-58101	to END	C-10	C-10	
CM-5-12	Variable Pulley	ALL		E-13	E-14	
CM-5-8	Wheel, Lower	50-53101	to END	B-9	B-9	
CM-5-9	Wheel, Lower	124-58101	to END	B-10	B-10	
CM-2-1	Wheel, Upper	50-53101	to 50-55359	C-1&2	C-1&2	
CM-2-10	Wheel, Upper	50-55360	to END	C-3&4	C-3&4	
CM-2-2	Wheel, Upper	124-58101	to END	C-5&6	C-5&6	
CM-9-5	Work Holding Jaw	ALL		F-1	F-2	

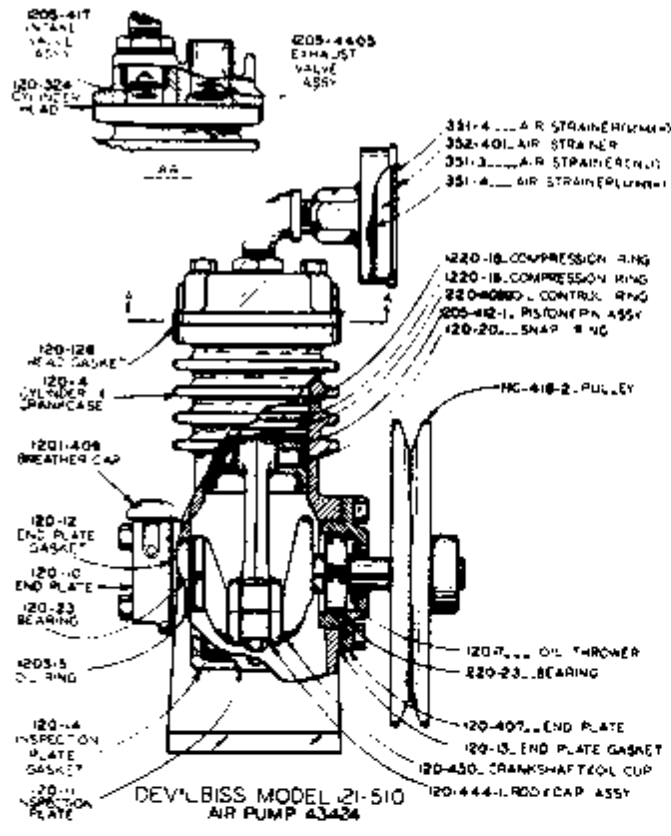


- JOB SELECTOR
- HEAD ASSEMBLY
- SPEED INDICATOR
- LAMP ASSEMBLY
- SAW AND FILE GUIDE
- BUTTWELDER
- TABLE AND TRUNNION
- 35-2907 COLUMN SAW GUARD
- 23264 WHEEL BRUSH
- TRANSMISSION
- VARIABLE
- 50908 CHIP BOX
- AIR PUMP

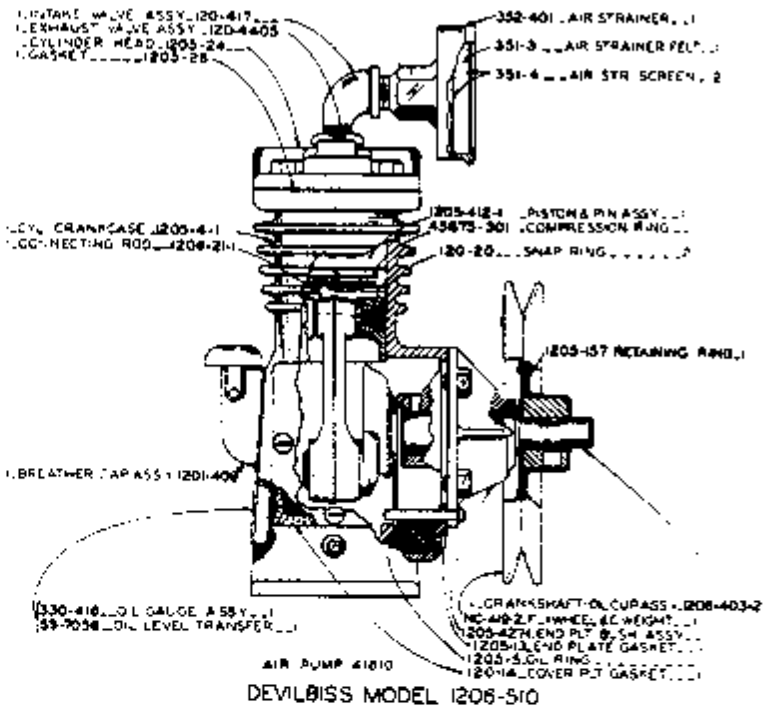
MODEL DoALL 16-3

CM-1-2

PRINTED IN U.S.A.

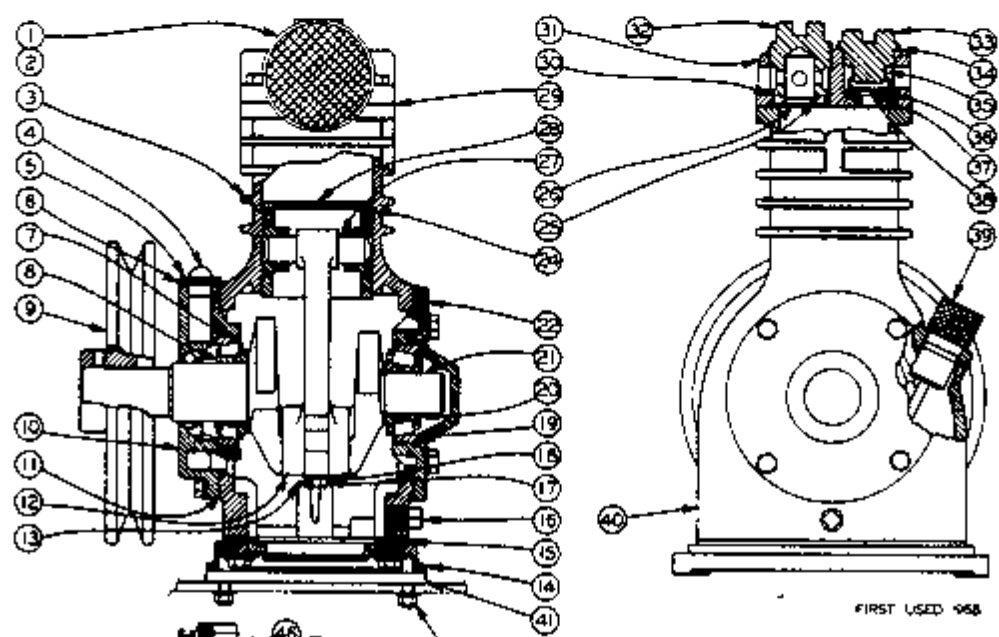


DEVLBISS MODEL 121-510
AIR PUMP 43424



AIR PUMP 41810
DEVLBISS MODEL 1208-510

NOTE TO REPLACE COMPLETE UNIT
ORDER #400885
PURCHASE INDIVIDUAL PARTS LOCALLY.
NUMBERS SHOWN ARE DEVLBISS NUMBERS.



*400885
AIR COMPRESSOR
(QUINCY)

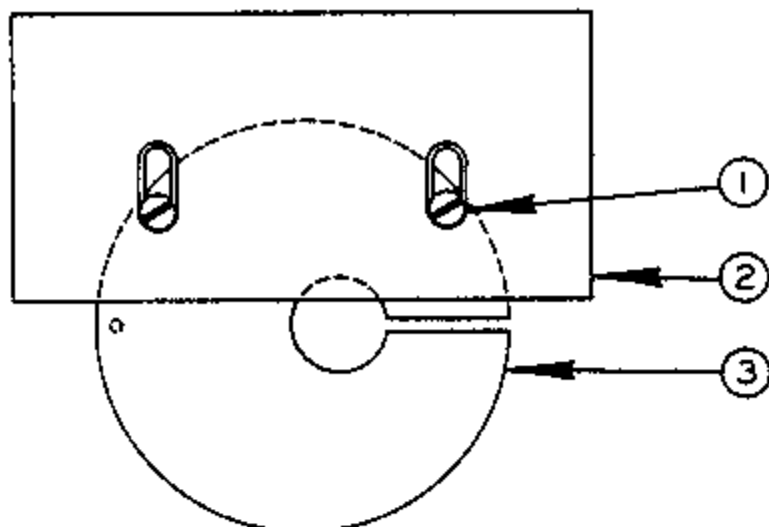
NEW DRG
9-22-67
REVISIONS
DATE
BY
CHKD
APP'D
REV
11-16-74

FIRST USED 1958

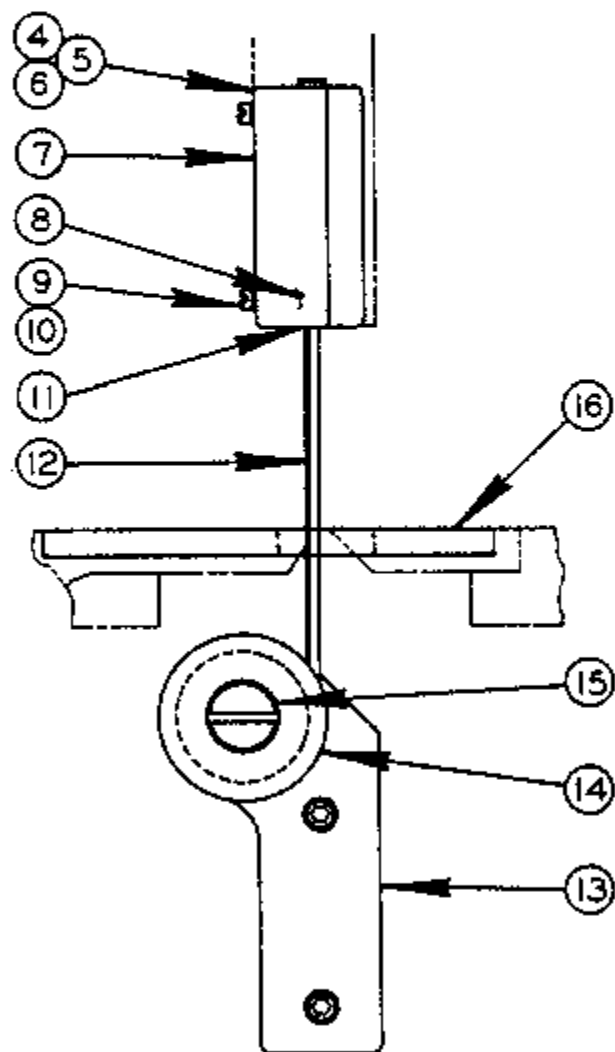
NOTE
PURCHASE REPLACEMENT
COMPRESSOR PARTS FROM
LOCAL SUPPLIER

AIR COMPRESSOR

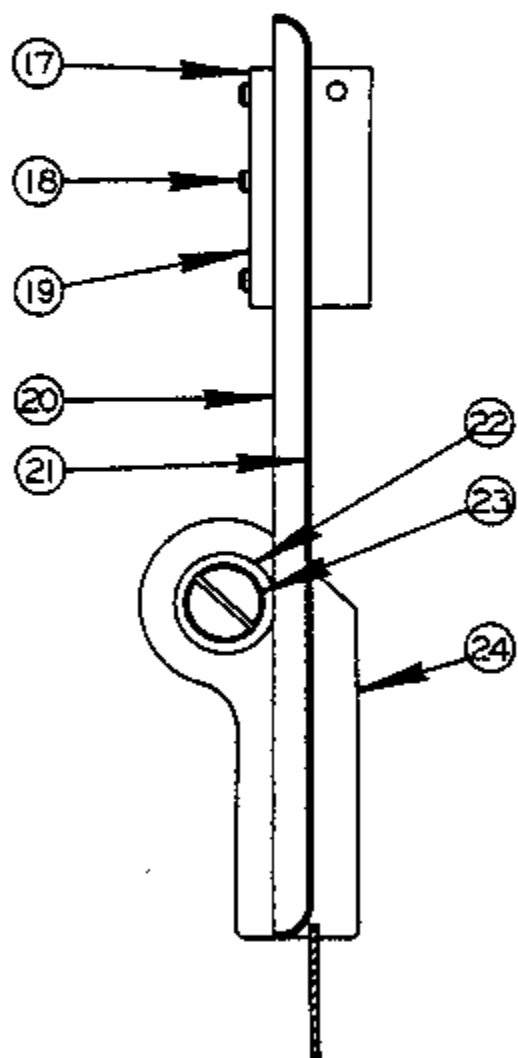
INDEX NO.	CATALOG NO.	DESCRIPTION	QUINCY CO. PART NO.	UNITS PER ASS'Y
Ref.	094-008950	Air Compressor (Quincy)		
1	091-186395	. Breather Assembly	2151-X	1
2	091-186403	. Replacement Felt	2149	1
3	091-186015	. Cylinder	2101	1
4	091-186023	. Stud Breather	7178	1
5	091-186031	. Breather Valve Bumper	2118	2
6	091-186049	. Breather Valve	2117	1
7	091-186056	. Bearing Cup	6553	1
8	091-186064	. Bearing Cone	6554	1
9	091-186411	. 6" Pulley For X-2 Compressor		Use
	091-186429	. 8" Pulley For X-2 Compressor		One
10	091-186072	. Bearing Carrier	6972	1
11	091-186080	. Bearing Plate Gasket	2115	2
12	091-186098	. Connecting Rod Assembly	2105	1
13	091-186106	. Connecting Rod Bolt Wire	2830	1
14	091-186114	. Oil Pan	2122	1
15	091-186122	. Oil Pan Gasket	2123	1
16	091-186130	. Oil Drain Plug	2140	1
17	091-186148	. Connecting Rod Bolt	2120	1
18	091-186155	. Connecting Rod Bolt Lockwasher	2121	1
19	091-186163	. Bearing Cup	6551	1
20	091-186171	. Bearing Cone	6552	1
21	091-186189	. Crank Shaft	6975	1
22	091-186197	. Bearing Carrier	6973	1
24	091-209437	. Piston Compressor Ring	6489	3
25	091-186262	. Suction Valve Spring	2132	1
26	091-186270	. Suction Valve Bumper	2131	1
27	091-186239	. Piston Pin Assembly	2126-X	1
28	091-186247	. Piston	2104	1
29	091-186254	. Head Gasket	2124	1
30	091-186288	. Suction Valve Bumper Gasket	2130	1
31	091-186304	. Cylinder Head	2100	1
32	091-186312	. Suction Valve Seat	2129	1
33	091-186320	. Discharge Valve Bumper	2133	1
34	091-186338	. Intercooler Gasket	2134	1
35	091-186346	. Discharge Valve Spring	1780	1
36	091-186296	. Valve	1194	2
37	091-186361	. Discharge Valve Guide	2136	1
38	091-186379	. Discharge Valve Guide	2137	1
39	091-186387	. Oil Gauge Assembly	2316-X	1
40	094-008356	. Air Compressor (6" Pulley)		Use
	094-019577	. Air Compressor (8" Pulley)		One
41	090-372525	. Adapter Plate Weldment		1
42	091-980276	. Screw, Hex. Hd. Cap 5/16-18NC x 3/4		4
43	091-992628	. Washer, Flat 5/16 Std.		4
44	091-991224	. Nut, Hex. 5/16-18NC		4
45	091-993238	. Washer, Lock 5/16 Std.		4
46	090-021031	. Relief Valve		1
47	135-008472	. Service Tee		1
48	090-020041	. Barbed Insert		1



SMALL PARTS FILING ASSEMBLY



BAND FILING ASSEMBLY

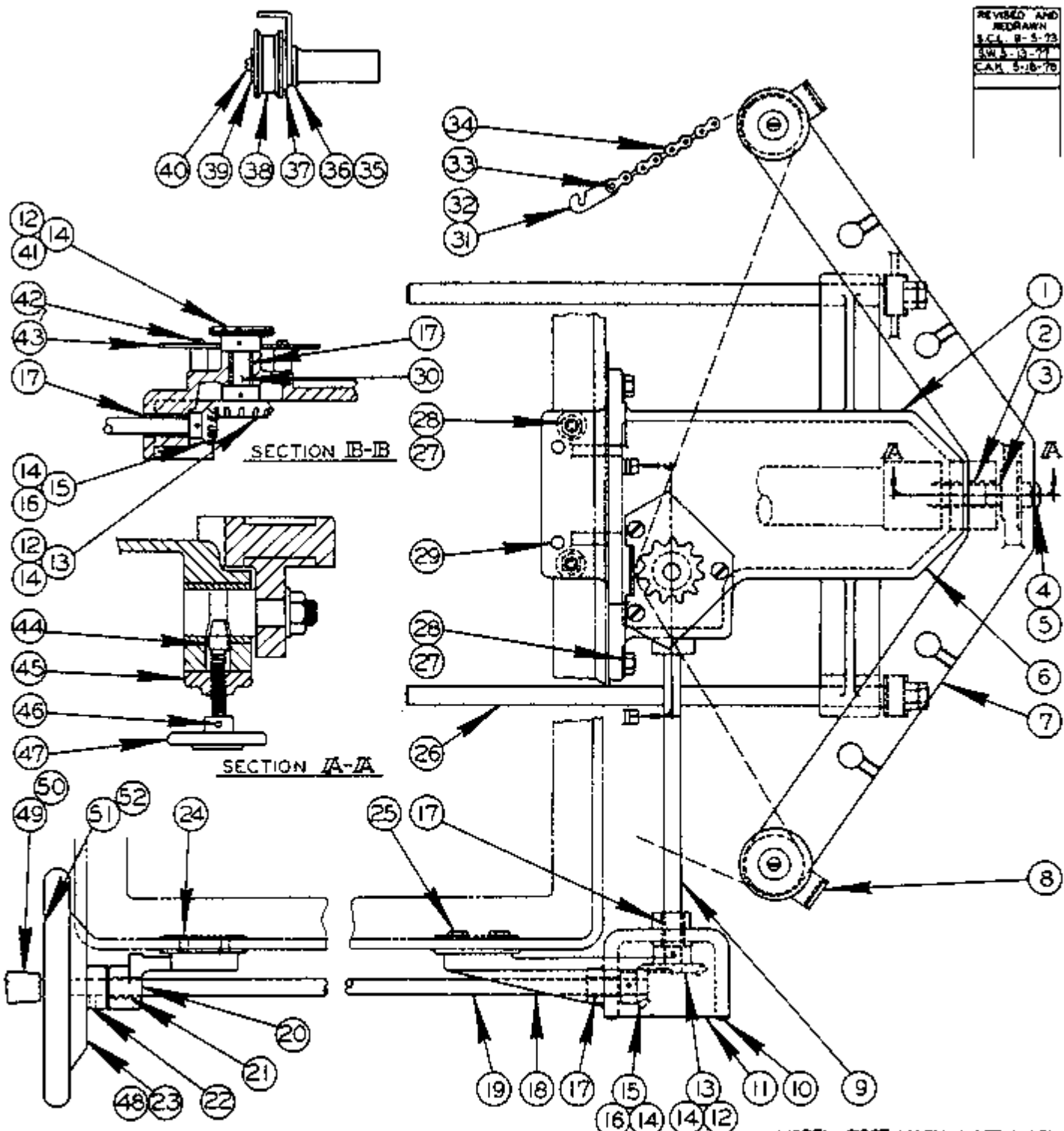


BAND POLISHING ASSEMBLY

BAND FILING & POLISHING ASSEMBLIES

INDEX NO.	CATALOG NO.	DESCRIPTION	UNITS PER ASS'Y	INDEX NO.	CATALOG NO.	DESCRIPTION	UNITS PER ASS'Y
Ref.	090-076456	Small Parts Filing Ass'y (1612, 1612-0, 1612-H, 1612-1, 2013, 2013-1, 2013-0, 2013-10, 2012-1A, 2012-A, 2012-AT, 2012-1AT, 2612-H, 2612-1, 3612, 3613-0, 3612-H, 3613-1)	9	091-986885	091-986885	Screw, Fil. Hd. Mach. #4-40NC x 5/8 (Ass'ys #27487, #27490, #34096, #34099)	2
1	091-987487	Screw, Fil. Hd. Mach. #10-24NC x 3/8	2	091-986992	091-986992	Screw, Fil. Hd. Mach. #10-24 NC x 5/8 (Ass'y #27488, #27491, #34097, #34103, #27489, #27492, #34098, #34104)	2
2	090-120460	Small Part Plate	1	10	091-993154	Washer, Lock #4 Std. (Ass'ys #27490, #34099)	2
3	090-120452	Center Plate	1	091-993196	091-993196	Washer, Lock #10 Std. (Ass'ys #27488, #27491, #34097, #34103, #27489, #27492, #34098, #34104)	2
Ref.	090-447806	Bond Filing Ass'y (1612, 1612-0, 1612-H, 1612-1, 1612-2, 1612-3, 2013, 2013-1, 2013-0, 2013-10, 2012-A, 2012-1A, 2012-AT, 2012-1AT, 2612-2H, 2613-3, 3612-H, 3613-1, 3612-3, 6013-3)	11	106-093073	106-093073	Insert (Ass'ys #27487, #34096)	1
Ref.	091-119487	Bond Filing Ass'y (1612, 1612-0, 1612-H, 1612-1, 1612-3, 2013, 2013-1, 2013-0, 2013-10, 2012-A, 2012-1A, 2012-AT, 2012-1AT, 3612-H, 3612-3)	12	106-093032	106-093032	Insert (Ass'ys #27490, #34099)	1
Ref.	091-327734	Bond Filing Ass'y (1612, 1612-0, 2013, 2013-1, 2013-0, 2013-10, 2012-A, 2012-AT, 2612-H, 2612-1, 3612, 3613-0)	13	106-093016	106-093016	Insert (Ass'ys #27488, #34097)	1
Ref.	094-049947	Bond Filing Ass'y (1612, 1612-0, 2013, 2013-1, 2013-0, 2013-10, 2012-A, 2012-AT, 2612-H, 2612-1, 3612, 3613-0)	14	106-093057	106-093057	Insert (Ass'ys #27491, #34103)	1
Ref.	090-465327	Bond Filing Ass'y (1612-3, 2612-2H, 2613-3, 3612-3, 6013-3)	13	106-093099	106-093099	Insert (Ass'ys #27489, #34098)	1
Ref.	094-014388	Bond Filing Ass'y (1613-3, 2612-2H, 2613-3, 3612-3, 6013-3)	14	106-093115	106-093115	Insert (Ass'ys #27492, #34104)	1
Ref.	090-447814	Bond Filing Ass'y (2613-2, 3613-2, 6013-2)	15	106-093081	106-093081	File Guide (Ass'ys #27487, #34096)	1
Ref.	090-455973	Bond Filing Ass'y (3613-2, 6013-2)	16	106-093040	106-093040	File Guide (Ass'ys #27490, #34099)	1
4	090-274879	1/4" File Guide Ass'y (Ass'ys #44780, #404994, #44781)	1	106-093024	106-093024	File Guide (Ass'ys #27488, #34097)	1
	090-274903	1/4" File Guide Ass'y (Ass'ys #111948, #132773, #45597)	1	106-093065	106-093065	File Guide (Ass'ys #27491, #34103)	1
	090-340969	1/4" File Guide Ass'y (Ass'y #48532)	1	106-093107	106-093107	File Guide (Ass'ys #27489, #34098)	1
	090-340993	1/4" File Guide Ass'y (Ass'y #401438)	1	106-093123	106-093123	File Guide (Ass'ys #27492, #34104)	1
5	090-274887	3/8" File Guide Ass'y (Ass'ys #44780, #404994, #43781)	1	134-093137	134-093137	Guide Plates (Not Shown) (Ass'ys #27490, #34099)	2
	090-274911	3/8" File Guide Ass'y (Ass'ys #111948, #132773, #45597)	1	Ref.	134-094028	Fin (Not Shown) (Ass'ys #27490, #34099)	2
	090-340977	3/8" File Guide Ass'y (Ass'y #48532)	1	090-013715	090-013715	Adapter	1
	090-341033	3/8" File Guide Ass'y (Ass'y #401438)	1	134-093129	134-093129	File Guide Back-up (Ass'ys #44780, #111948, #132773, #404994, #44781, #45597)	1
6	090-274895	1/2" File Guide Ass'y (Ass'ys #44780, #404994, #44781)	1	091-109314	091-109314	File Guide Back-up (Ass'ys #48532, #401438)	1
	090-274929	1/2" File Guide Ass'y (Ass'ys #111948, #132773, #45597)	1	134-090018	134-090018	Screw Assembly	1
	090-340985	1/2" File Guide Ass'y (Ass'ys #48532)	1	090-038019	090-038019	Head	1
	090-341041	1/2" File Guide Ass'y (Ass'y #401438)	1	090-038027	090-038027	Screw	1
7	090-274176	Bracket (Ass'y #27487)	1	090-106279	090-106279	Center Plate (Ass'ys #44780, #111948, #48532, #401438)	1
	090-274184	Bracket (Ass'y #27490)	1	091-201285	091-201285	Center Plate (Ass'ys #132773, #404994)	1
	090-340951	Bracket (Ass'y #34096)	1	Ref.	091-069575	Bond Polishing Ass'y (1611-H, 1611-U, 1612, 1612-0, 1612-H, 1612-1, 2013, 2013-1, 2013-0, 2013-10, 2012-A, 2012-1A, 2012-AT, 2012-1AT, 2612-H, 2612-1, 3612-U, 3612, 3613-0, 3612-H, 3613-1)	1
	090-340964	Bracket (Ass'y #34099)	1	090-290230	090-290230	Bond Polishing Ass'y (1612-1, 1613-2, 1612-3, 3613-1, 3613-2, 3612-3)	1
	090-274200	Bracket (Ass'y #27488)	1	Ref.	090-274853	Bond Polishing Ass'y (26-2, 60-2, 2612-2H, 2613-2, 6013-2)	1
	090-274218	Bracket (Ass'y #27491)	1	Ref.	090-274846	Bond Polishing Ass'y (16-2, 16-3, 36-2, 36-3)	1
	090-340936	Bracket (Ass'y #34097)	1	Ref.	090-274861	Bond Polishing Ass'y (26-3, 60-3, 2613-3, 6013-3)	1
	090-340928	Bracket (Ass'y #34103)	1	Ref.	091-069583	Bond Polishing Ass'y (2612-1)	1
	090-274192	Bracket (Ass'y #27489)	1	17	090-166869	Bond Polishing Sub-Ass'y (Ass'ys #106957, #29023, #27485, #27484, #106958)	1
	090-274226	Bracket (Ass'y #27492)	1	090-274143	090-274143	Bond Polishing Sub-Ass'y (Ass'y #27486)	1
	090-340910	Bracket (Ass'y #34098)	1	18	091-986968	Screw, Fil. Hd. Mach. #10-24 NC x 3/8	3
	090-340902	Bracket (Ass'y #34104)	1	19	090-274127	Bracket	1
8	106-093149	Washer (Ass'ys #27487, #27490, #34096, #34099)	2	20	106-103013	Backup Plate (Ass'y #16686)	1
	106-093131	Washer (Ass'ys #27488, #27491, #34097, #34103, #27489, #27492, #34098, #34104)	2	21	135-099232	Backup Plate (Ass'y #27414)	1
				22	134-105055	Backup Cloth	1
				23	134-104025	Guide Backup	1
					134-090018	Screw Assembly	1
					090-038019	Head	1
					090-038027	Screw	1
				24	090-013715	Adapter	1
					090-105701	Center Plate (Not Shown) (Ass'ys #106957, #106958)	1

REVISED AND
 REDRAWN
 S.C. 8-5-73
 SOW 3-13-77
 C.A.K. 5-18-78



CONTOUR ATTACHMENT
 ASSEMBLY

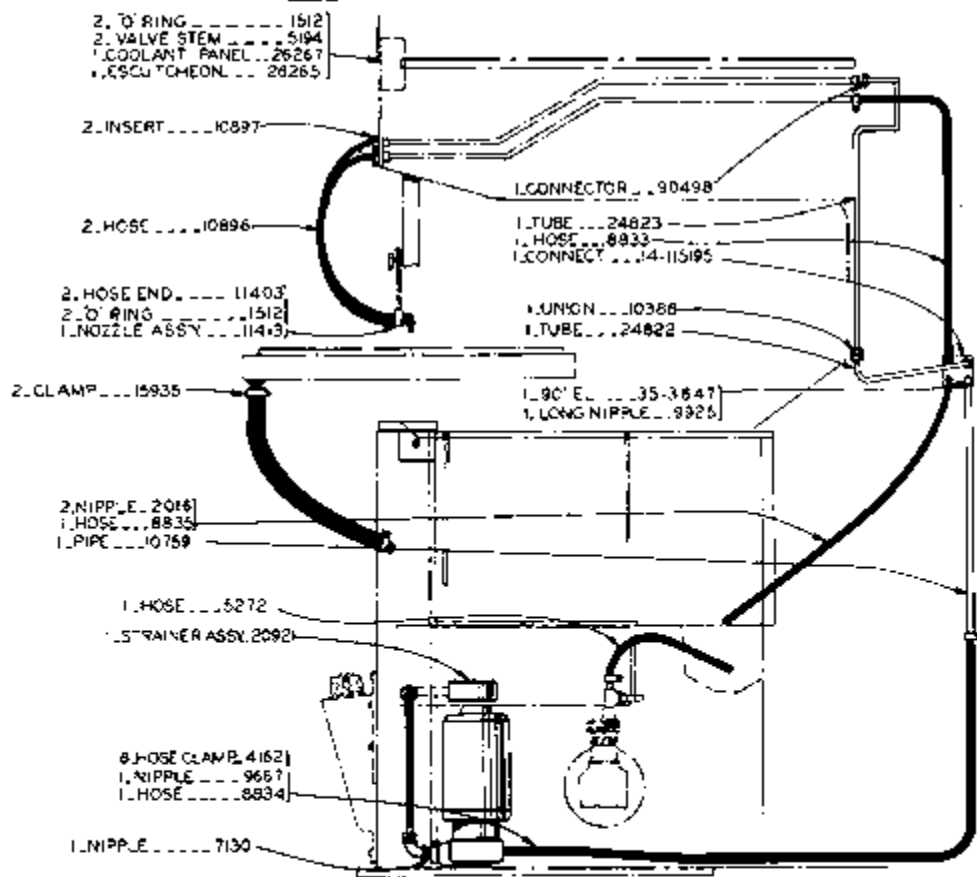
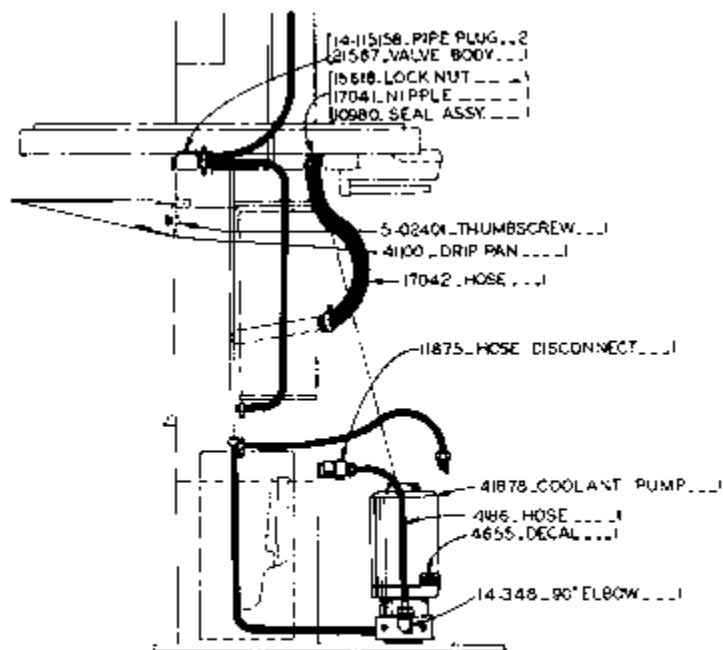
MODEL	FIRST MACH.	LAST MACH.
2612-2H	206-62101	206-73347
1612-3	152-59101	152-751144
D18-3	124-58101	124-60324
D36-3	126-58101	128-60251
3612-3	153-59101	153-761249
2612-1H	240-65101	240-68145
3612-H	272-68101	272-77373
2012-1H	348-75101	
2012-1H3	354-76101	
3612-1H3	358-76101	
2613-1H	361-76101	
3612-1H	382-77101	
2012-2H	383-78101	
2012-2H3	397-78101	

CONTOUR ATTACHMENT ASSEMBLY

INDEX NO.	CATALOG NO.	DESCRIPTION	UNITS PER ASS'Y
Ref.	090-521030	Contour Attachment Line Assembly	
1	090-523234	. Contour Attachment Sub-Assembly	1
2	090-095076	. Oilite Bearing	1
3	090-119520	. Spacer	1
4	091-991323	. Nut, Hex. Jam 1/2-13NC	6
5	091-992669	. Washer, 1/2" Std.	3
6	090-521048	. Bracket	1
7	090-521055	. Support Bar	1
8	134-174010	. Thumb Screw	2
9	090-095068	. Shaft	1
10	091-988386	. Screw, Rd. Hd. Mach. #6-32NC x 1/4	2
11	090-016965	. Cover	1
12	090-042607	. Roll Pin	3
13	090-144353	. Bevel Gear	2
14	091-984104	. Screw, Soc. Hd. Set #10-24NC x 1/4	5
15	090-144346	. Bevel Gear	2
16	090-042433	. Roll Pin	2
17	135-006476	. Oilite Bearing	4
18	090-426032	. Gear Box	1
19	093-068666	. Shaft	1
20	090-426024	. Bracket	1
21	135-006476	. Oilite Bearing	1
22	090-042615	. Roll Pin	1
23	094-033693	. Contour Handwheel Sub-Assembly	1
24	135-005163	. Dowel Pin	4
25	091-980284	. Screw, Hex. Hd. Cap 5/16-18NC x 7/8	4
26	090-095050	. Shaft	2
27	091-980466	. Screw, Hex. Hd. Cap 3/8-16NC x 1	4
28	091-993329	. Washer, Lock 3/8 Std.	4
29	135-032183	. Dowel Pin	2
30	090-016932	. Shaft	1
31	135-050136	. Chain Assembly	1
32	135-003291	. Connector	1
33	091-995464	. Rivet Rd. Head 3/16 Dia. x 7/16	1
34	135-006740	. Chain	1
35	135-006716	. Horizontal Roller Assembly	2
36	135-020055	. Guide And Post Assembly	1
37	106-233380	. Washer	A.R.
38	135-075919	. Roller	1
39	135-075927	. Washer	1
40	091-988857	. Screw, Rd. Hd. Mach. #10-24NC x 1/2	1
41	135-006724	. Chain Sprocket	1
42	091-990184	. Screw, Truss Hd. Mach. 1/4-20NC x 5/16	3
43	135-006732	. Chain Retainer	1
44	090-095092	. Hand Wheel Stud	1
45	090-239658	. Hand Wheel Housing	1
46	090-042177	. Roll Pin	1
47	090-095100	. Hand Wheel	1
48	090-486432	. Servo Handwheel	1
49	091-181164	. Handle	1
50	091-181172	. Pin	1
51	091-256297	. Name Plate Servo	1
52	091-993972	. Drive Screw #2 x 1/4	2

Following Items Not Shown:

090-402629	. Adjustable Work Holding Jaw Assembly (See Detail)	1
091-982389	. Screw, Soc. Hd. Cap 1/4-20NC x 5/8	4
091-452094	. Escutcheon	1
091-993972	. Drive Screw #2 x 1/4	4



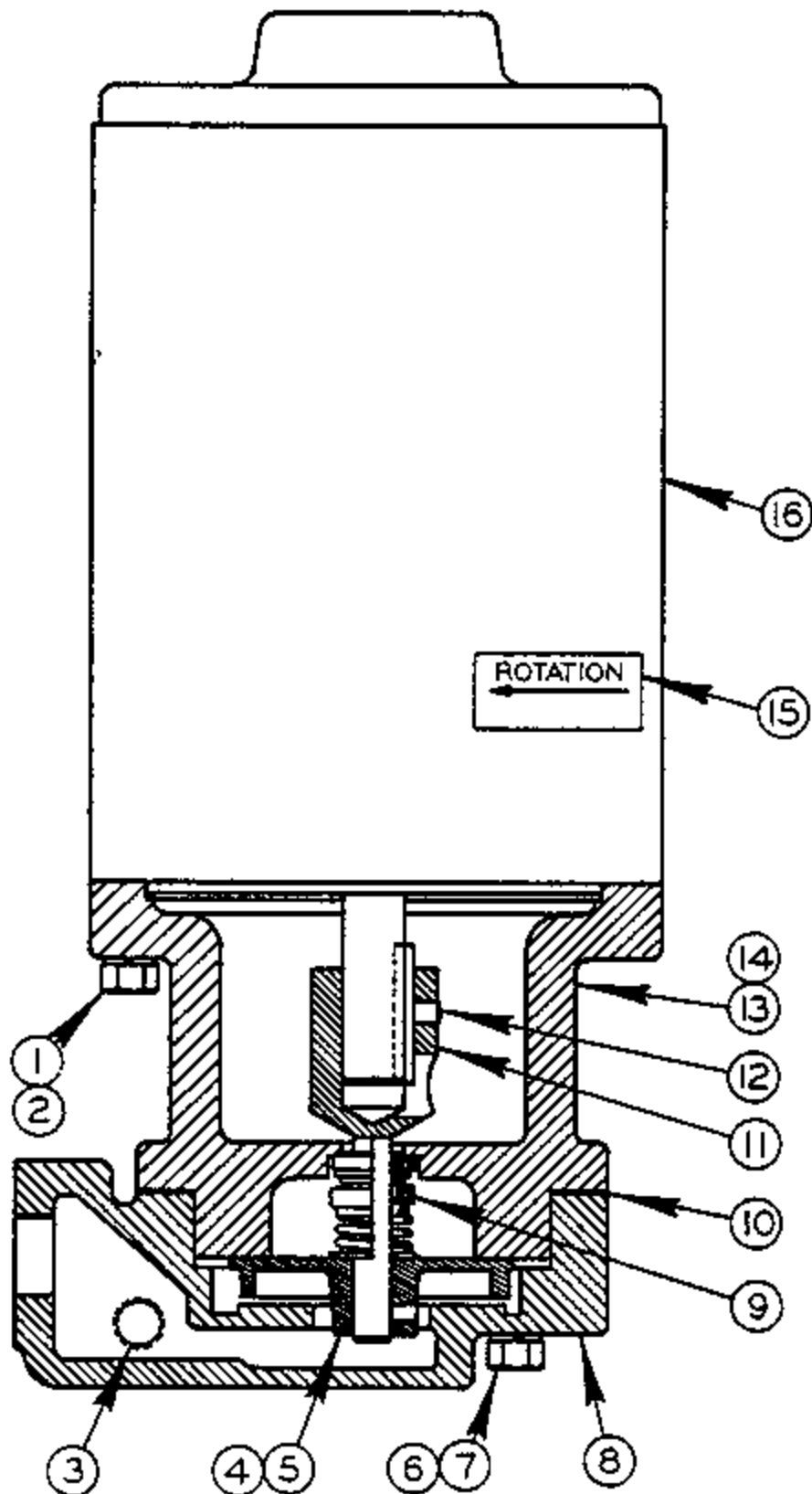
COOLANT AND AIR ASSY.

CM-B-6

MODEL	FIRST MACHINE	LAST MACHINE
38-3	120-5607	120-80251
19-7	124-5891	124-80384

PRINTED IN U.S.A.

REVISED AND REDRAWN
S.W. 5-22-70
S.W. 4-24-73
SCL 11-30-73
SCL 12-10-75
S.W. 3-21-77



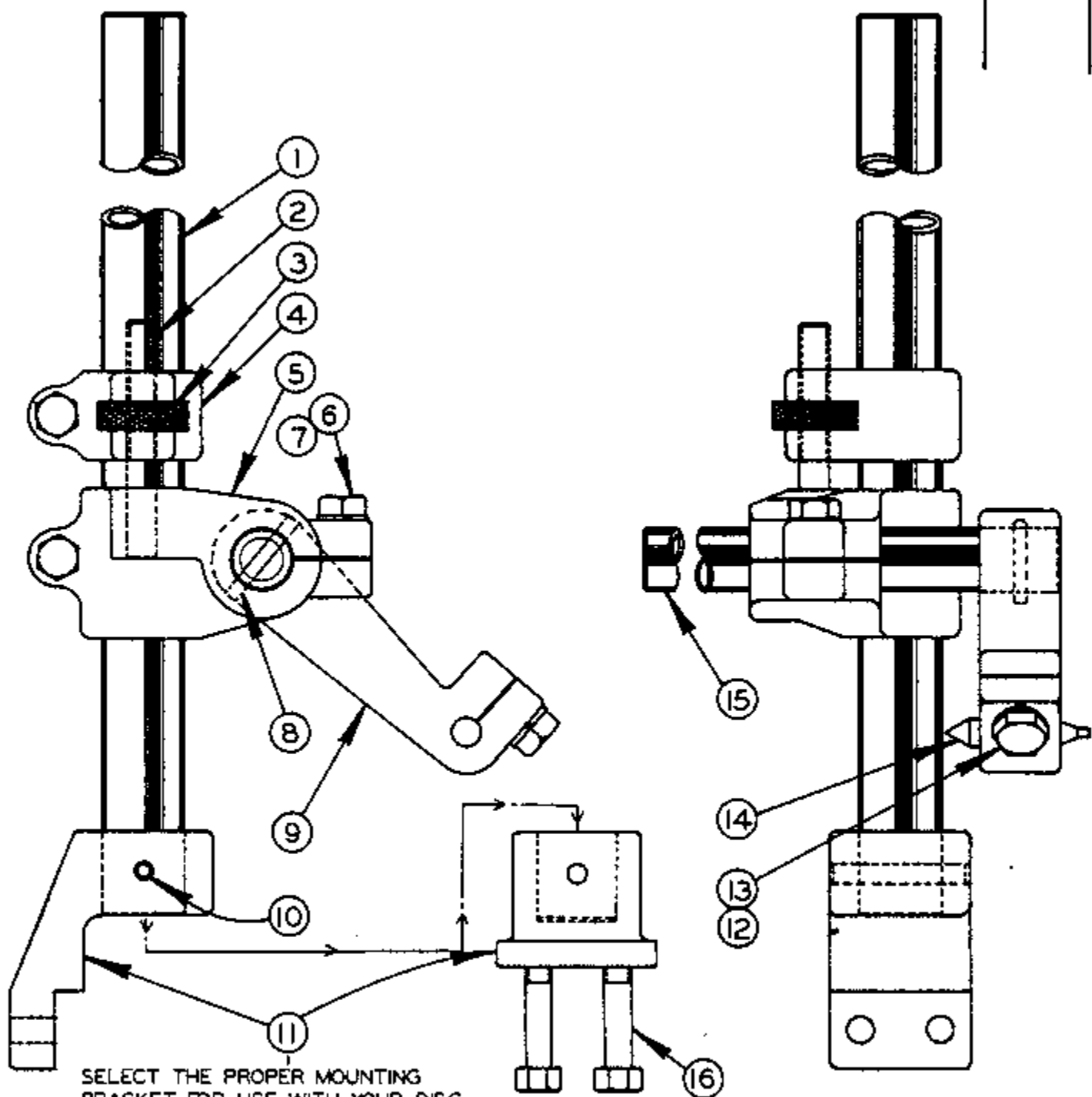
MODEL FIRST MACH. LAST MACH.
 TF-24 231-65102 231-66127
 NOTE:
 USED ON SAWS IF
 SUPPLIED.

*41878
 COOLANT PUMP

CODE NO. CM-8-16PS-6-7TF-5-60

COOLANT PUMP ASSEMBLY

INDEX NO. REF.	CATALOG NO.	DESCRIPTION	UNITS PER ASS'Y
	090-418781	Coolant Pump Assembly	
1	091-980474	. Screw, Hex. Hd. Cap 3/8-16NC x 1 1/4	4
2	091-993329	. Washer, Lock 3/8	4
3	091-227488	. Pipe Plug	1
4	090-029299	. Impeller (2875-3450 RPM)	USE
	090-251067	. Impeller (25 V Motor, 1450 RPM)	ONE
5	091-984179	. Screw, Soc. Set #10-32NF x 1/4	1
6	091-980334	. Screw, Hex. Hd. Cap 5/16-18NC x 2	4
7	091-993238	. Washer, Lock 5/16	4
8	090-404492	. Impeller Housing	1
9	090-029307	. Roto Flex Seal	1
10	090-029281	. Gasket	1
11	090-071101	. Stub Shaft	1
12	091-984328	. Screw, Soc. Set 1/4-28NF x 1/4	1
13	090-418864	. Adapter	1
14	111-055091	. Pipe Plug	1
15	090-046558	. Rotation Decal	1
16	090-070400	. Motor (Specify V, HP Cycle, Phase)	1

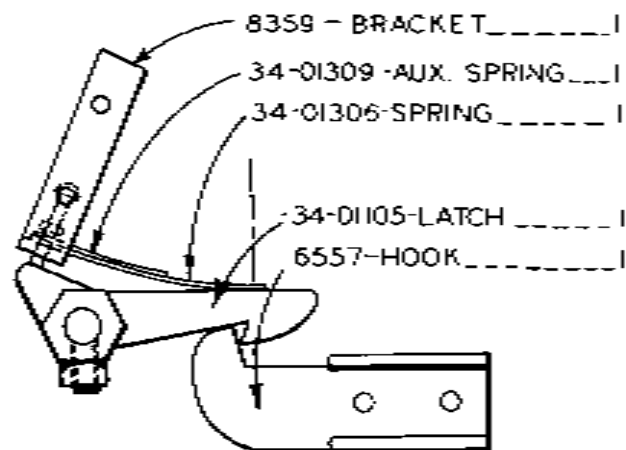
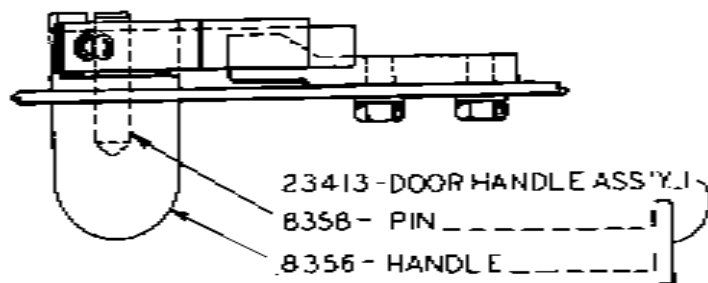


SELECT THE PROPER MOUNTING BRACKET FOR USE WITH YOUR DISC-CUTTER.

DISC CUTTER ASSEMBLY

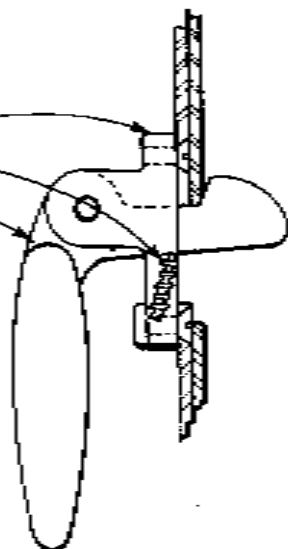
DISC CUTTER ASSEMBLY

INDEX NO.	CATALOG NO.	DESCRIPTION	UNITS PER ASS'Y
REF.	094-020807	Disc Cutter Assembly (Contour & Contour-Matic Machines)	
REF	090-400441	Disc Cutter Assembly (Zephyr, 6013-3, 6013-H3)	
1	135-033991	. Radius Arm	1
2	105-154132	. Adjustment Screw	1
3	105-154124	. Adjustment Wheel	1
4	105-151096	. Adjustment Housing	1
5	135-034007	. Radius Arm Clamp	1
6	091-980466	. Screw, Hex. Hd. Cap 3/8-16NC x 1	3
7	091-993329	. Washer, Lock 3/8 Std.	3
8	090-042615	. Roll Pin	1
9	135-034023	. Center Pin Clamp	1
10	090-042763	. Roll Pin (Used on Ass'y #094-020807)	1
	090-042755	. Roll Pin (Used on Ass'y #090-400441)	1
11	090-390196	. Bracket (Used on Ass'y #094-020807)	1
	090-200452	. Bracket (Used on Ass'y #090-400441)	1
12	091-980292	. Screw, Hex. Hd. Cap 5/16-18NC x 1	3
13	091-993238	. Washer, Lock 5/16 Std.	3
14	105-154157	. Center Pin	1
15	135-034015	. Center Adjustment Tube	1
16	091-980334	. Screw, Hex. Hd. Cap 5/16-18NC x 2 (DZ-36 Only) ..	2
	091-980318	. Screw, Hex. Hd. Cap 5/16-18NC x 1 1/2 (All other Models)	2
Following Items Not Shown:			
	134-203082	. Wrench	1
	091-980284	. Screw, Hex. Hd. Cap 5/16-18NC x 7/8 (Used Only on Ass'y #094-020807)	



UPPER DOOR LATCH ASS'Y. 23414

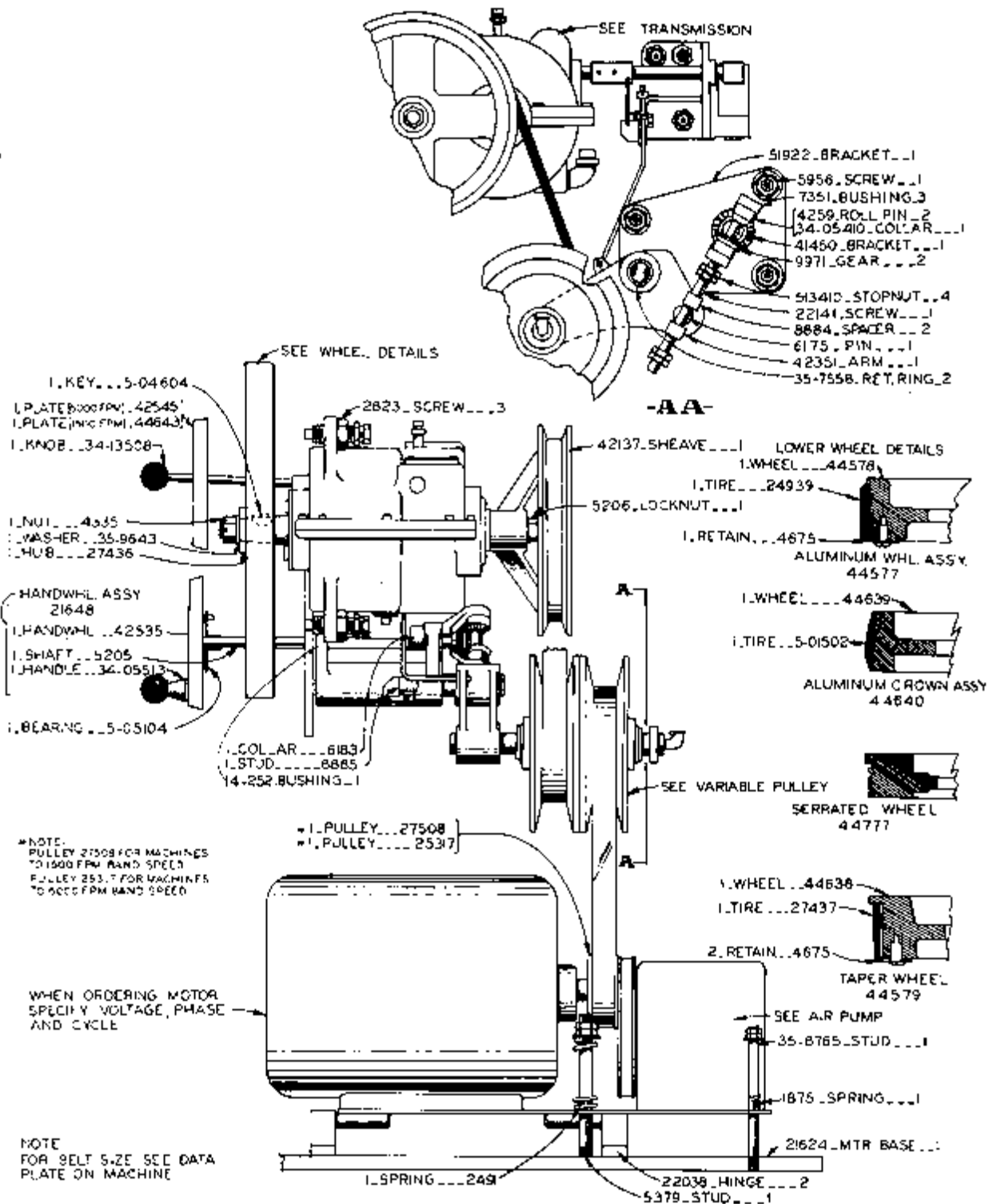
1- BRACKET _____ 728
 1- SPRING _____ 6673
 1- HANDLE _____ 5729



LOWER DOOR LATCH ASS'Y 21842

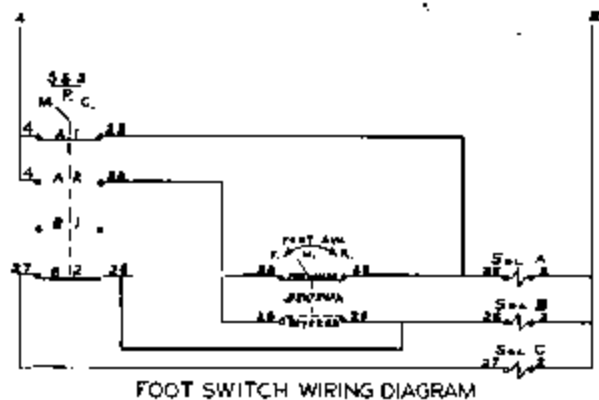
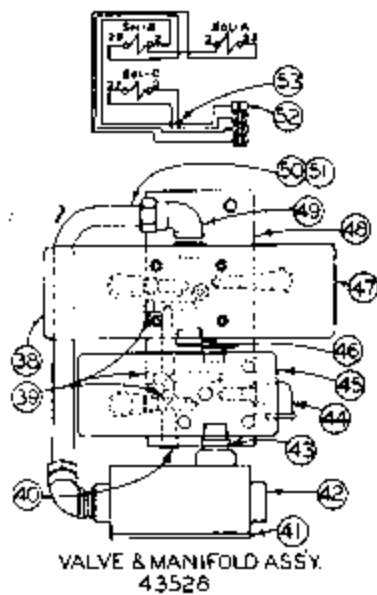
MODEL	FIRST MACH.	LAST MACH.
18-1	48-53101	48-55209
16-2	45-53101	45-581123
	123-58101	123-60295
16-3	50-53101	50-58854
	124-58101	124-40324
26-2	54-53101	54-58390
	127-58101	127-60138

MODEL	FIRST MACH.	LAST MACH.
24-3	55-53101	55-58545
	128-58101	128-59170
40-2	56-53101	56-57108
	129-58101	129-59104
60-3	57-53101	57-58142
	130-58101	130-60106

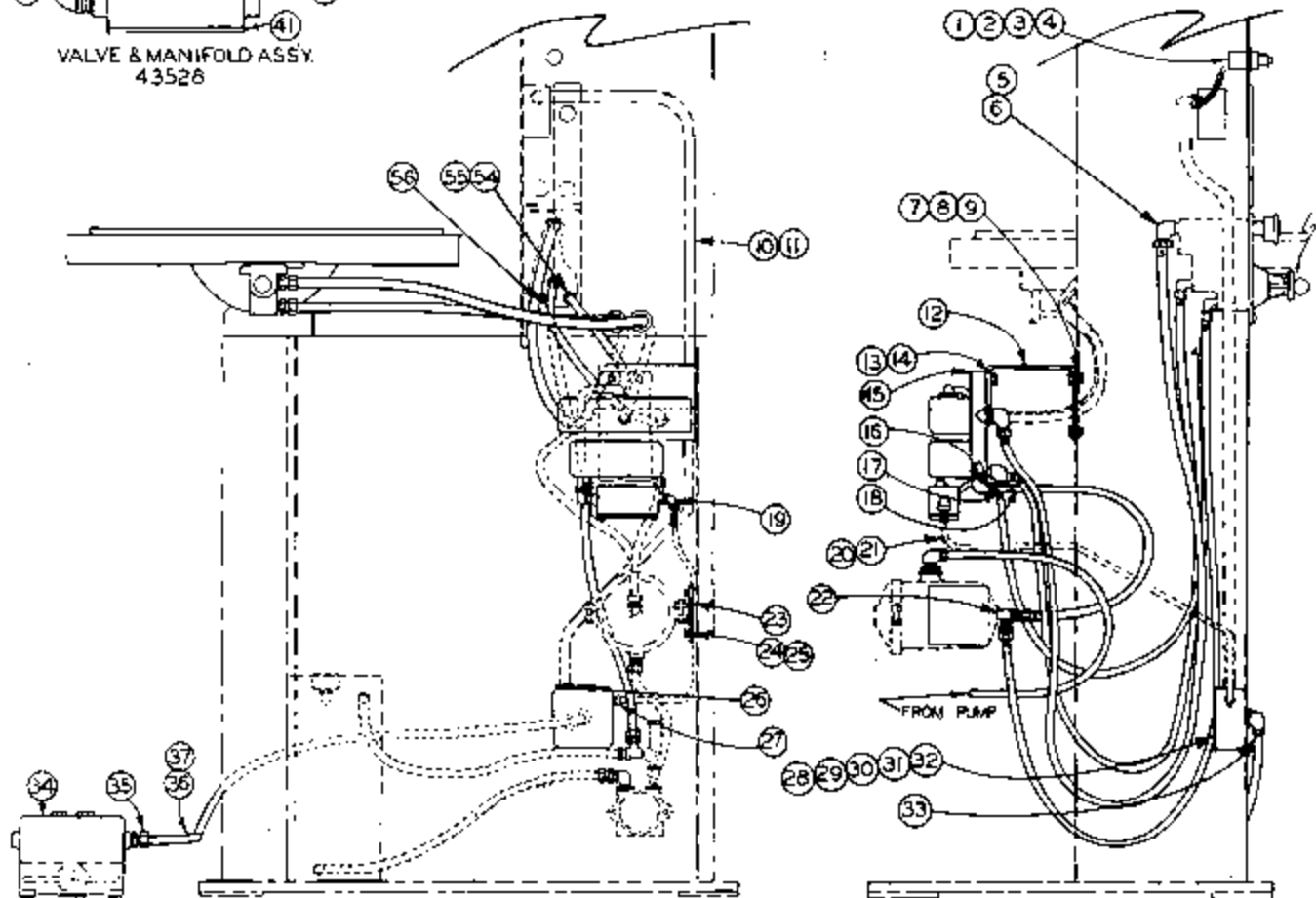


DRIVE ASSEMBLY
 16-3 36-3

MODEL	FIRST YRCH	LAST YRCH
16-3	124-5815	124-80324
36-3	126-58101	126-80251



REV.	DESCRIPTION
1	REVISED

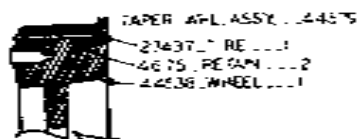


16-3, 1612-3, 36-3
FOOT SWITCH ASSEMBLY

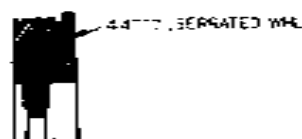
MODEL	FIRST MACH	LAST MACH
16-3	50-53101	50-58654
1612-3	124-58101	124-60324
36-3	132-5101	53-57516
	153-53101	126-60251

FOOT SWITCH ASS'Y

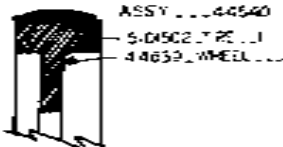
INDEX NO.	PART NO.	DESCRIPTION	UNITS PER ASS'Y
2	Ref.	Foot Switch Ass'y (16-3 - 1612-3)	
1	14962	• Contact Block	1
2	15241	• Selector Operator	1
3	104821	• Contact Block	1
4	12422	• Name Plate	1
5	107108	• 90° Male Connector	3
6	1403	• 90° Male Connector	2
7	Comm.	• Hex. Hd. Mach. Scr. 5/16-18NC x 3/4" L.G.	4
8	Comm.	• Lockwasher 5/16 Std.	4
9	Comm.	• Hex. Nut 5/16-18NC	4
10	Stk #811	• Plastic Slaeving	A.R.
11	Comm.	• Wire Stranded #14 Red x 72" L.G.	6
12	27935	• Bracket	1
13	Comm.	• Hex. Hd. Mach. Scr. 1/2-13NC x 1-1/4 L.G.	2
14	Comm.	• Lockwasher - 1/2 Std.	2
15	43528	• Manifold Ass'y (See Detail)	1
16	1401	• Male Connector	2
17	13383	• Male to Female run tee	1
18	Stk #211	• Nylon Tubing - 3/8 OD	A.R.
19	19508-E	• 90° Connector	1
20	Comm.	• Wire Stranded #14 Red x 47" L.G.	7
21	19519	• Conduit	1
22	35-982	• Service Tee	1
23	100939	• Pad	1
24	Comm.	• Hex. Hd. Cap Scr 5/16-18NC x 1/2.	4
25	Comm.	• S.A.E. Flat Washer 5/16 Std.	4
26	107429	• Rubber Grommet	1
27	19508-A	• Str. Connector	1
28	19506-A	• Outlet Box	1
29	19506-B	• Cover	1
30	Comm.	• Rd. Hd. Mach. Scr. #10-24NC x 7/16" L.G.	2
31	Comm.	• Hex. Nut #10-24NC	2
32	Comm.	• Lockwasher	2
33	8438	• 90° Connector	1
34	104881	• Foot Switch	1
35	8437	• Str. Connector	1
36	Stk #520	• Sealrite Conduit 1/2	A.R.
37	Stk #734	• Wire Stranded 14 Red.	A.R.
38	43528	• Valve & Manifold Ass'y	1
39	14-115158	• Soc. Pipe Plug	3
40	35-7957	• Soc. Pipe Plug	1
41	12753	• Box Cover	1
42	12752	• Pylet	1
43	14-661	• Nipple	1
44	17-13521	• Street Elbow	4
45	54167	• Valve	1
46	5672	• Soc. Pipe Plug	2
47	51066	• Valve	1
48	14502	• 90° Connector	2
49	25620	• Manifold	1
50	Comm.	• Conduit Sealrite 3/8 x 12" L.G.	1
51	Comm.	• Wire Stranded #14 Red x 24" L.G.	3
52	Comm.	• Wire Markers W. H. Brady 1-33	4
53	19510-A	• Wire Connector	1
54	5-11513	• 90° Street Elbow	2
55	3898	• Male Connector	6
56	17-13521	• 90° Street Elbow	1



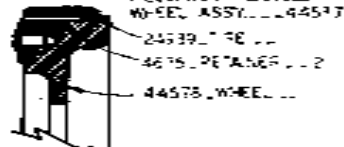
16-3...35 TO 5000 RPM DUCT IRON FLANGED STEEL BACKED RUBBER TIRE TAPERED



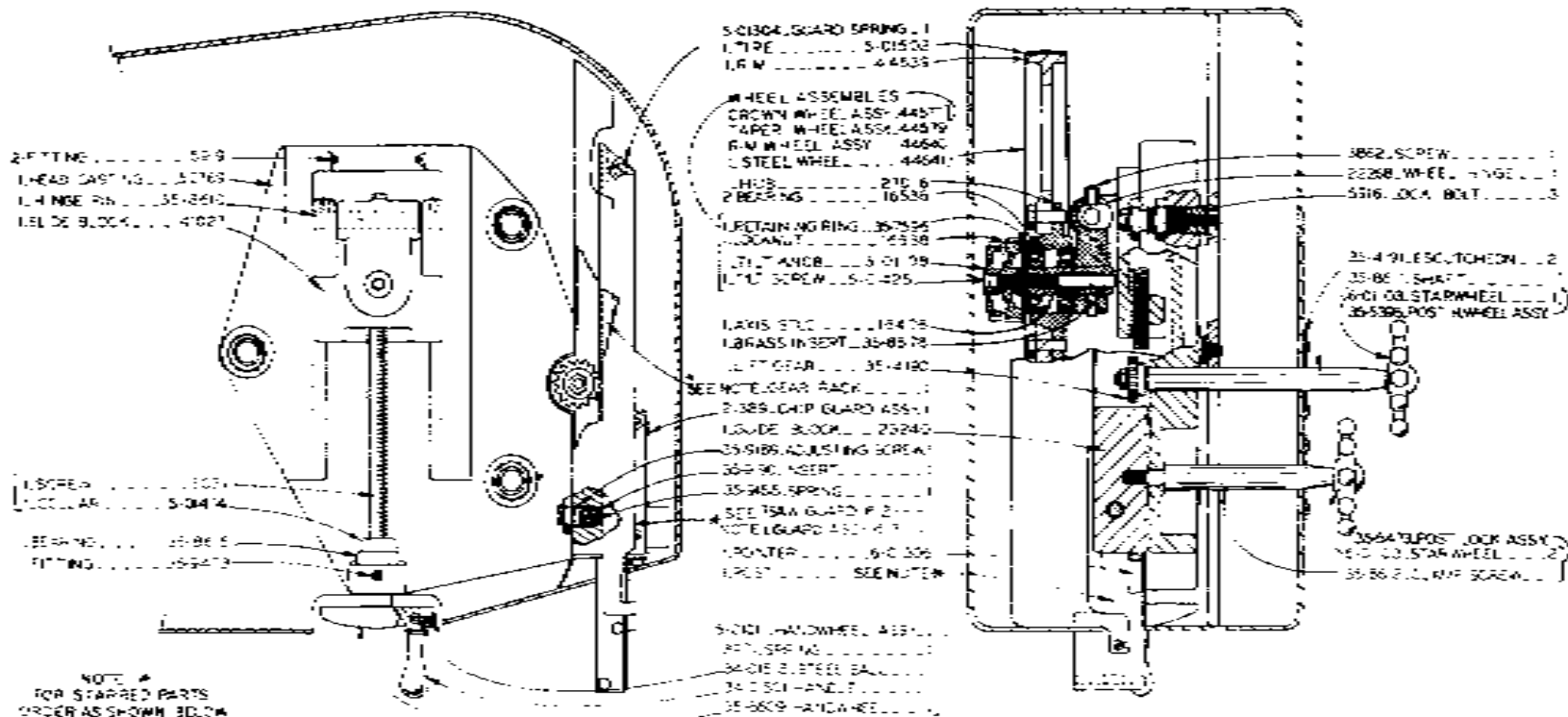
16-3...35 TO 5000 RPM DUCT IRON FLANGED WHEEL SERRATED O.D.



36-2...16 TO 300 AND 50 TO 1500 RPM CRANKED ALUMINUM WITH FABRIC BACKED TIRE



36-26...2...35 TO 6000 RPM ALUMINUM FLANGED WHEEL WITH STEEL BACKED CROWN TIRE



NOTE #
 FOR SPARRED PARTS
 ORDER AS SHOWN BELOW
 ITEM 36-2,16-2 16-3 36-3
 RACK... 5374 5004 22152
 SAW GUARD 41265 42759 44555
 POST... 41228 41138 54332

MODEL	FIRST MACH	LAST MACH
4-3	25-68 01	123-60295
16-3	24-58107	24-50324
36-2	125-58 01	25-57533
36-3	125-68 01	125-6025

HEAD ASSEMBLY

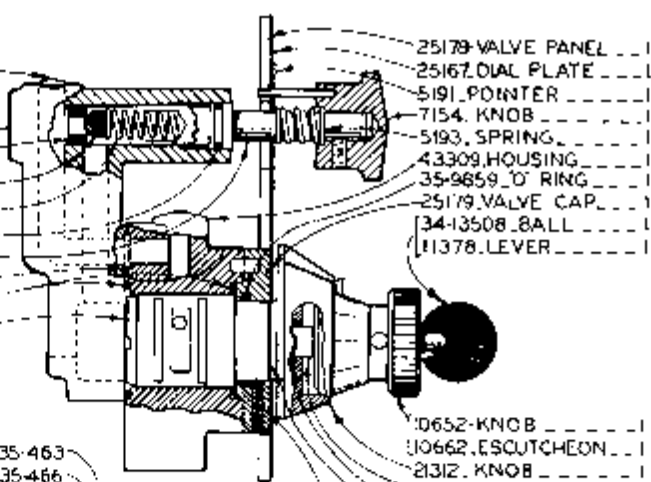
C-2-0 CM-2-2

PRINTED IN USA

2. PLUG ... 52304

1. HOUSING ... 52304
 1. BALL SEAT ... 382
 1. BALL ... 35-5657
 1. SPRING ... 35-9173
 1. O' RING ... 35-6541
 1. VALVE SCREW ... 9884
 1. O' RING ... 3370
 2. O' RING ... 1508
 1. VALVE SPOOL ... 24755

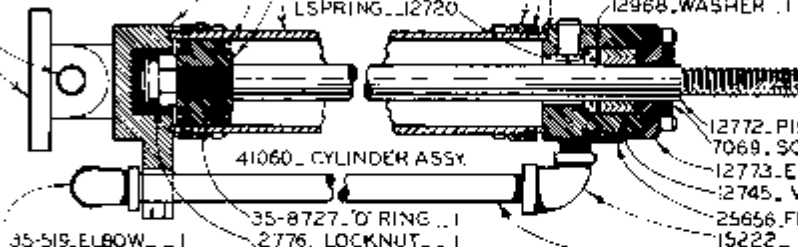
25179 VALVE PANEL ... 1
 25167 OIL PLATE ... 1
 5191 POINTER ... 1
 7154 KNOB ... 1
 5193 SPRING ... 1
 43309 HOUSING ... 1
 35-9859 O' RING ... 1
 25179 VALVE CAP ... 1
 34-13508 BALL ... 1
 11378 LEVER ... 1



1. PISTON ... 12341
 2. CUP ... 2743
 1. REAR CAP ... 25655
 35-891 SHIM ... 2
 25584 SWIVEL ... 1
 5120 SWIVEL PIN ... 1

2. GASKET ... 35-463
 2. SNAP RING ... 35-466
 2. COLLAR ... 35-465
 12774 CYLINDER ... 1
 1 SPRING ... 12720
 43322 VALVE ASSY [COMPLETE]
 12968 WASHER ... 1

10652 KNOB ... 1
 110662 ESCUTCHEON ... 1
 21312 KNOB ... 1
 24751 VERNIER SPOOL ... 1
 35-6727 O' RING ... 1
 10375 GASKET ... 1
 14-250 SPRING ... 1
 134-01518 BALL ... 1

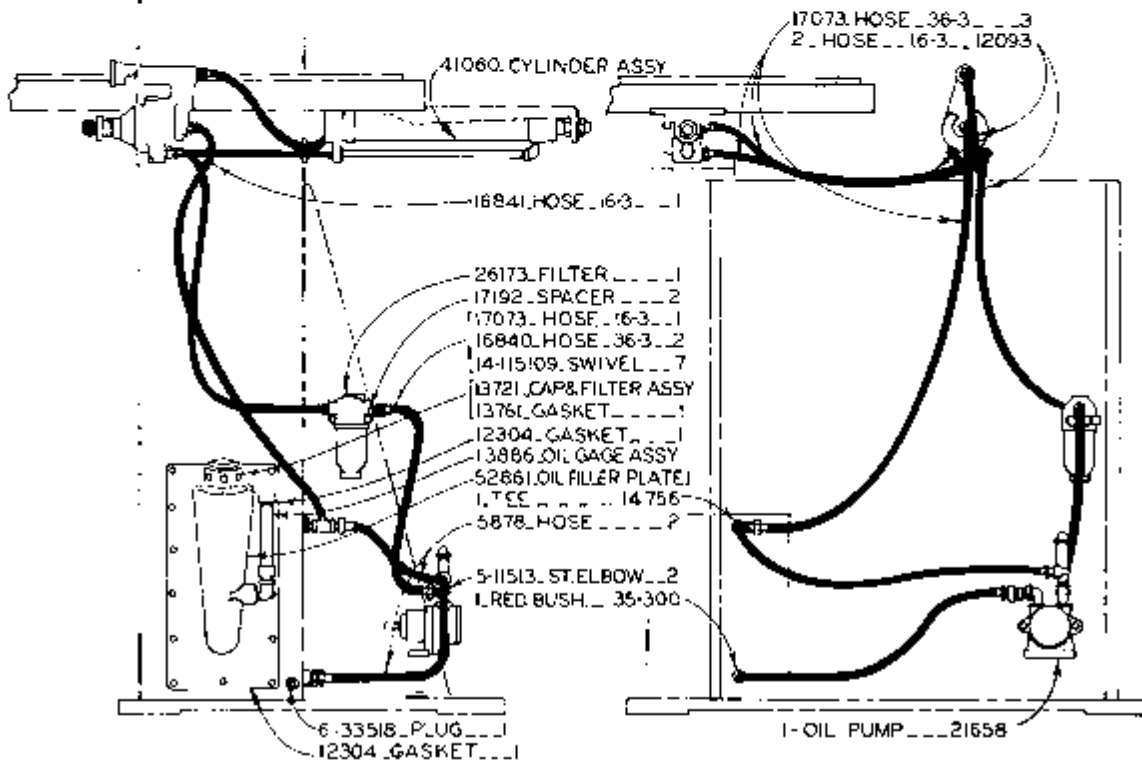


35-519 ELBOW ... 1

35-8727 O' RING ... 1

2776 LOCKNUT ... 1

12772 PISTON ROD ... 1
 7069 SCRAPER RING ... 1
 12773 END CAP ... 1
 12745 V PACKING ... 1
 25656 FRONT BLOCK ... 1
 15222 ELBOW ... 1
 15460 PIPE ... 1



17073 HOSE .36-3 ... 3
 2 HOSE ... 16-3 ... 12093

41060 CYLINDER ASSY

16841 HOSE .16-3 ... 1

26173 FILTER ... 1
 17192 SPACER ... 2
 17073 HOSE .16-3 ... 1
 16840 HOSE .36-3 ... 2
 14-115109 SWIVEL ... 7
 13721 CAP & FILTER ASSY ... 1
 13761 GASKET ... 1
 12304 GASKET ... 1
 13886 OIL GAGE ASSY ... 1
 52861 OIL FILLER PLATE ... 1
 1 TEE ... 14 756
 5878 HOSE ... 2

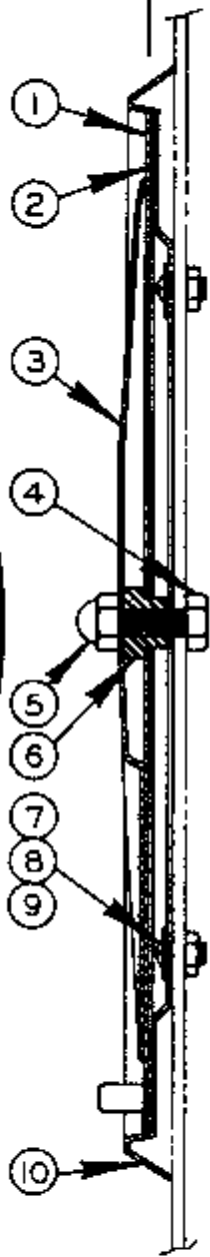
5-11513 ST. ELBOW ... 2
 1 RED BUSH ... 35-300

6-33518 PLUG ... 1
 12304 GASKET ... 1

1 OIL PUMP ... 21658

HYDRAULIC SYSTEM MODEL 16-3.36-3

MODEL	FIRST MACH	LAST MACH
16-3	134-58101	134-60324
36-3	126-58101	126-60751



JOB SELECTOR ASSEMBLY

C-8-104 CM-B-53 Z-6-54

PRINTED IN U.S.A.

JOB SELECTOR

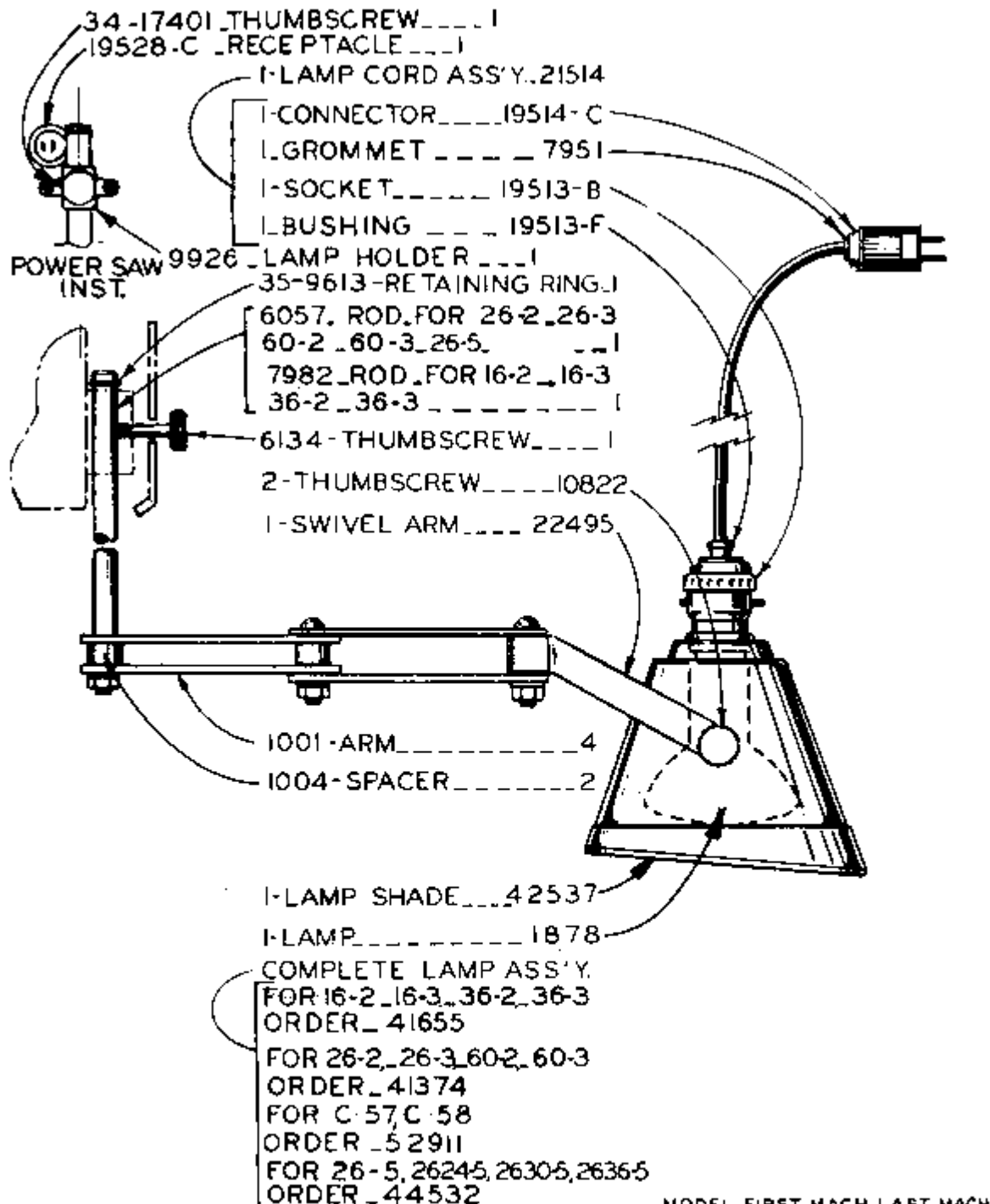
INDEX NO.	CATALOG NO.	DESCRIPTION	UNITS PER ASS'Y
Ref.	090-468174	Job Selector (1612-U, 3012-U, 1611-H, 2612-1H, 2013, 2013-0, 2012-A, 2012-AT, 1612-0, 3613-0, 1612, 3612, 2013-1, 2013-10, 2012-1A, 2012-1AT, 3612-1H, 3612-1, 3613-10)	
*Ref.	090-435603	Job Selector (1612-1, 3613-1, 2612-1, 2613-2, 6013-2, 2618-4, HS-6013, ZW-3620, ZV-3620, ZS-3620)	
1	090-220781	. Job Selector Dial	1
2	106-143043	. Outer Edge Felt	4
3	094-008380	. Job Selector Plate	1
4	091-990283	. Screw, Truss Hd. Mach. 5/16-18NC x 3/4	1
	*091-980276	. Screw, Hex. Hd. Cap 5/16-18NC x 3/4	1
5	090-044496	. Acorn Nut 5/16-18NC	1
6	106-144017	. Bushing	Use
	*090-027012	. Bushing	One
*7	091-988907	. Screw, Rd. Hd. Mach. 1/4-20NC x 1/4	4
*8	091-993741	. Washer, Lock Shakeproof 1/4 Internal	4
*9	091-991141	. Nut, Hex. Jam 1/4-20NC	4
*10	090-426727	. Job Selector Frame	1

NOTE: Job Selectors #090-468174 & #090-435603, First Used 9/17/62. Before This Date #094-008380 Plate and #090-220781 Dial, Must Be Replaced Together As A Unit.

*NOTE: Starred Items Used Only On Assembly #090-435603.

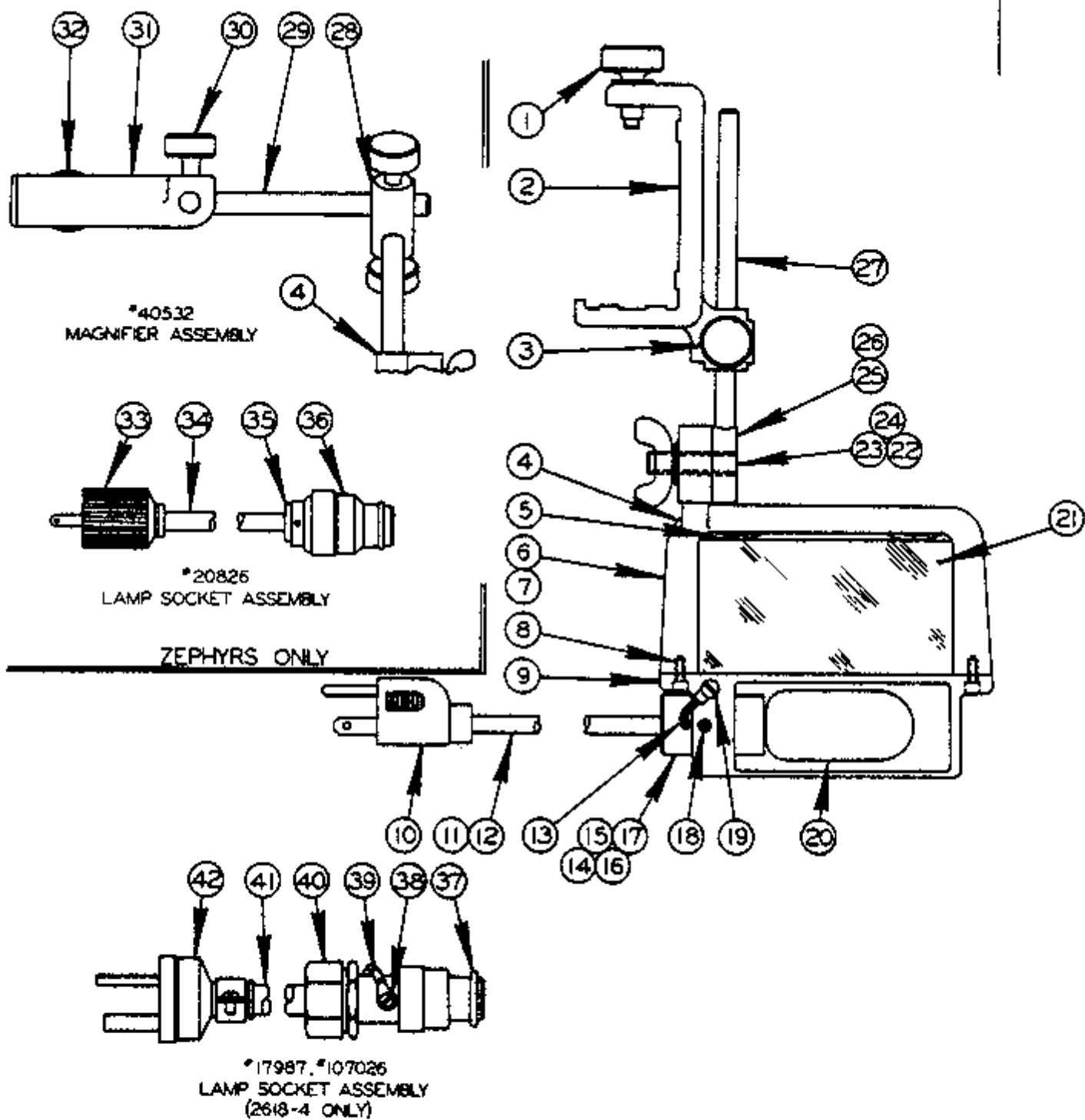
*NOTE: Last Used On Models:

MODEL	LAST MACH.
1613-2	150-69593
3613-2	151-69515
1612-3	152-691017
2613-3	198-69361
3612-3	153-691054
6013-3	199-70125
1612-H	288-69204
2612-H	284-69135
2612-2H	206-69308
3612-H	272-69152



LAMP ASSEMBLY

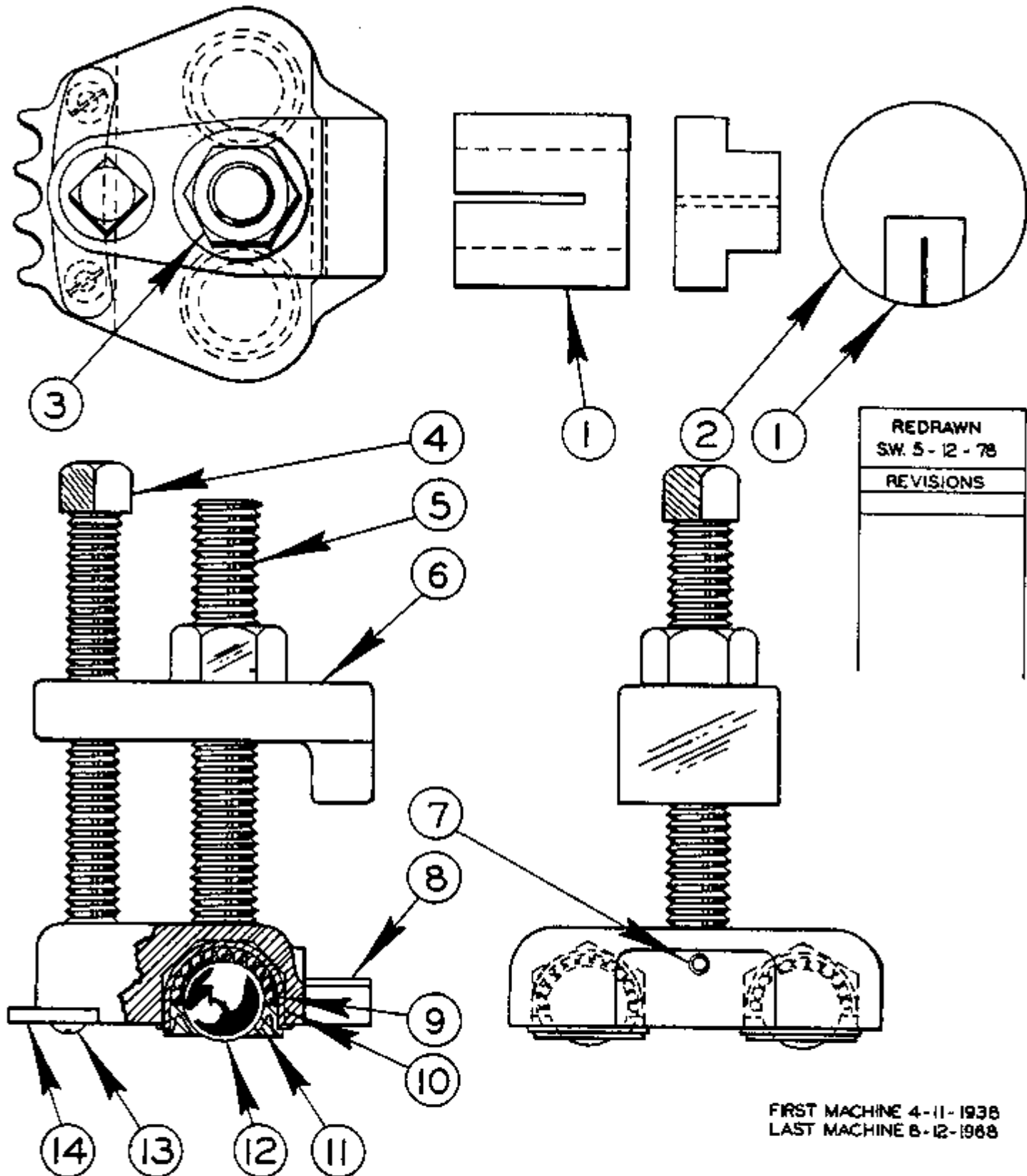
MODEL	FIRST MACH	LAST MACH
16-2	123-58101	123-60295
16-3	124-58101	124-60324
26-2	127-58101	127-60138
26-3	128-58101	128-59170
26-5	117-58101	117-60108
36-2	125-58101	128-59183
36-3	126-58101	128-60251
60-2	129-58101	129-59104
60-3	130-58101	130-50106
C-57	98-54101	140-60207
C-58	97-54101	140-60219



MAGNIFIER ATTACHMENT
ASSEMBLY

MAGNIFIER ATTACHMENT ASSEMBLY

INDEX NO.	CATALOG NO.	DESCRIPTION	UNITS PER ASSY
Ref.	135-005551	Magnifier Attachment Assembly(1612, 1612-0, 1612-H, 1612-1, 1613-2, 1612-3, 2012-A, 2012-AT, 2013, 2013-0, 2012-1A, 2012-1AT, 2013-1, 2013-10, 2612-H, 2612-1, 3612, 3613-0, 3612-H, 3613-1, 3613-2, 3612-3, 2614-1, 2012-1H, 2012-2H, 2012-1H3, 2012-2H3, 3612-1H3, 3612-2H3)	
Ref.	090-428723	Magnifier Attachment Assembly(2613-2, 2613-3, 6013-2, 6013-3, 6013-H3, 2612-1H3)	
Ref.	090-477670	Magnifier Attachment Assembly(2618-4)	
Ref.	090-405325	Magnifier Attachment Assembly(ZS-3620, ZV-3620, ZW-3620)	
1	134-174010	Thumbnut(As'sys #135-005551, #090-428723, #090-477670)	1
	091-982421	Screw, Soc. Hd. Mach. 1/4-20NC x 1	2
2	093-001899	Post Clamp(Assembly #135-005551)(1-1/2" Post)	Use
	090-243932	Post Clamp(Assembly #090-428723)(2-3/4" Post)	
	090-477639	Post Clamp(Assembly #090-477670)(3-1/4" Post)	
	094-000734	Post Clamp(Assembly #090-477670)(Extra Work Height)	One
3	135-005544	Thumb Nut	1
4	090-451055	Magnifier Sub-Assembly (Assembly #135-005551, #090-428723)	Use
	090-477688	Magnifier Sub-Assembly (Assembly #090-477670)	
	090-412529	Magnifier Sub-Assembly (Assembly #090-405325)	One
5	135-021046	Lens Spring	2
6	135-052694	Magnifier Housing Sub-Assembly	1
7	135-005528	Frame	1
8	091-986901	Screw, Fil. Hd. Mach. #6-32NC x 3/8	2
9	135-005536	Housing	1
10	093-021681	Lamp Socket Assembly (Assembly #090-451055 Only)	1
11	091-305383	Electrical Cord	1
12	091-038372	Wire Terminal	2
13	091-038349	Wire Terminal	1
14	091-035360	Socket Bushing	1
15	091-338848	Socket 75-W, 125-V	1
16	091-305375	Strain Relief	1
17	091-984062	Screw, Soc. Set #8-32NC x 1/4	1
18	091-984104	Screw, Soc. Set #10-24NC x 1/4	1
19	091-988519	Screw, Rd. Hd. Mach. #8-32NC x 1/4	1
20	091-338749	Lamp (Assembly #090-451055, #090-412529)	Use
	090-195124	Lamp (Assembly #090-477688)	One
21	134-175017	Magnifying Lens	1
22	135-005593	Pivot Stud	1
23	091-992628	Washer 5/16" SAE Std.	1
24	135-005627	Wing Nut	1
25	135-005601	Post Arm Swivel Sub-Assembly (Assembly #090-451055)	Use
	091-070290	Arm Assembly (Assembly #090-477688)	
	135-008761	Post Arm Swivel Sub-Assembly(Assembly #090-477688, 36" Zephyrs)	
	090-183757	Post Arm Swivel Sub-Assembly(Assembly #090-412529)	One
26	135-005585	Swivel (Assembly #135-005601, #091-070290)	Use
	135-008720	Swivel (Assembly #135-008761, #090-183757)	One
27	135-005569	Arm (Assembly #135-005601)	Use
	091-070243	Arm (Assembly #091-070290)	
	135-008712	Arm (Assembly #135-008761)	
	091-363440	Rod (Assembly #090-183757)	One
Ref.	090-405325	Magnifier Attachment Assembly(ZS-3620, ZV-3620, ZW-3620)	
28	090-031089	Joint	1
29	090-031071	Arm	1
30	135-005544	Thumb Nut	3
31	090-229030	Post Clamp	1
32	134-174010	Thumb Nut	1
Ref.	090-208245	Lamp Socket Assembly (Zephyrs)	1
33	091-353946	Midget Card Connector	1
34	090-007923	Rubber Cord	A.R.
35	091-353888	Bushing	2
36	091-353912	Socket	1
Ref.	090-179870	Lamp Socket Assembly (2618-4 L.A. Machines)	1
Ref.	091-070268	Lamp Socket Assembly (2618-4)	1
37	090-183476	Socket	1
38	091-988519	Screw, Rd. Hd. Mach. #8-32NC x 1/4	1
39	091-038349	Wire Terminal	1
40	090-183468	Card Grip Connector	1
41	090-007956	Rubber Cord	A.R.
42	090-162132	Plug U-Ground	1



REDRAWN SW. 5-12-78
REVISIONS

FIRST MACHINE 4-11-1938
LAST MACHINE 8-12-1968

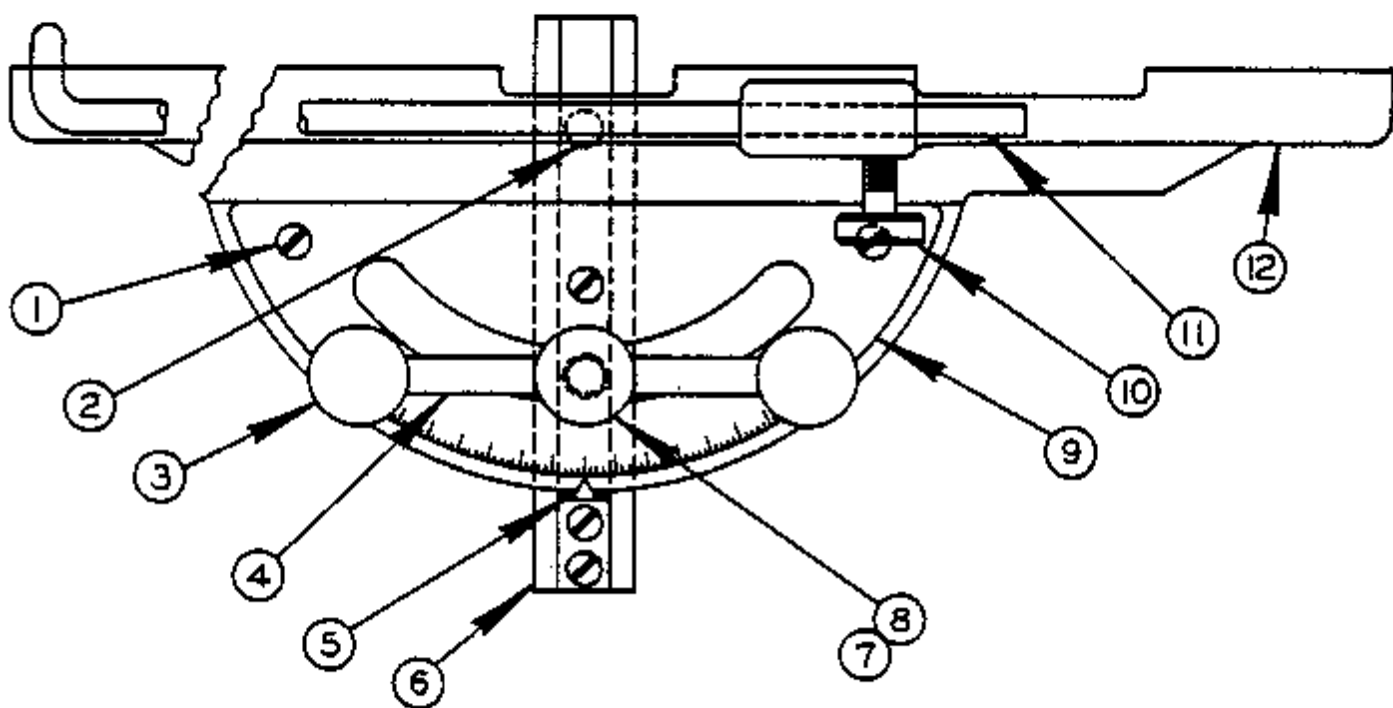
HEAVY
PARALLEL WORK CLAMP ASSEMBLY

C-10-22 CM-10-B Z-10-11

PRINTED IN U.S.A.

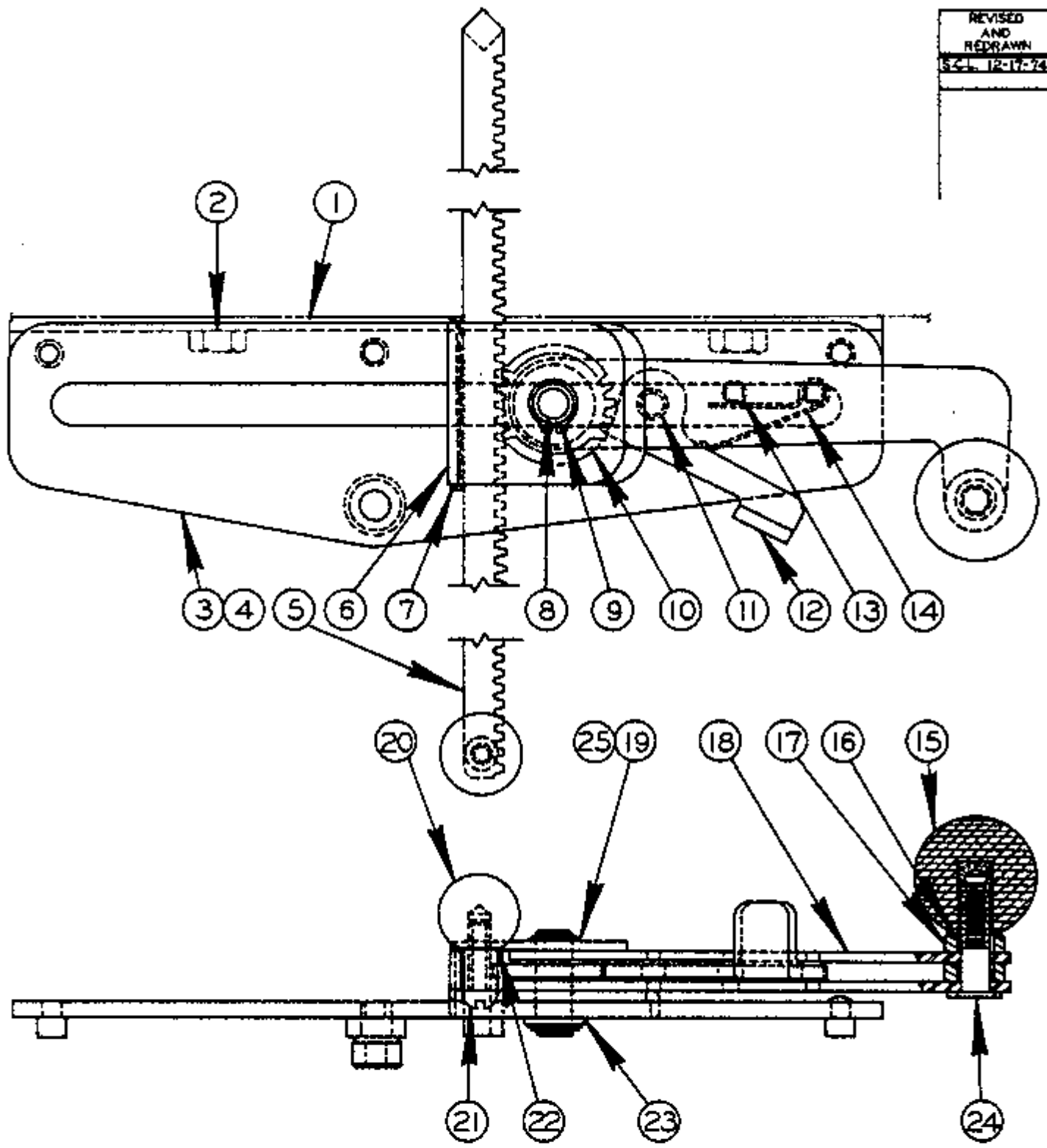
HEAVY
PARALLEL WORK CLAMP ASSEMBLY

INDEX NO.	CATALOG NO.	DESCRIPTION	UNITS PER ASS'Y
Ref.	106-240047	Parallel Work Clamp Assembly	
1	106-244130	. Center Support (1" Slot)	Use
	135-008787	. Center Support (1-1/4" Slot)	One
2	090-279506	. Center Plate (4-1/2" Dia.)	1
Ref.	135-051746	. Parallel Work Clamp Sub-Assembly	4
3	091-991356	. . Nut, Hex, 5/8-11NC	1
4	106-245087	. . Screw, Sq. Hd. Set	1
5	106-244155	. . Clamp Stud	1
6	106-243074	. . Parallel Arm Weldment	1
7	091-984112	. . Screw, Soc. Hd. Set #10-24NC x 3/8.....	1
8	106-241078	. . Clamp Body	1
9	106-245053	. . Ball	130
10	106-243066	. . Ball Cup	2
11	135-037976	. . Ball Retaining Ring	2
12	106-245046	. . Ball	2
13	091-988691	. . Screw, Rd. Hd. Mach. #10-24NC x 1/2	2
14	105-133136	. . Work Holding Jaw Sprocket (1/2" Pitch)	Use
	106-233372	. . Work Holding Jaw Sprocket (3/16" Pitch)	One



PROTRACTOR WORK STOP
AND
ALIGNMENT GAGE ASSEMBLY

REVISED
AND
REDRAWN
54-12-17-74



RATCHET TABLE FEED ASSEMBLY

C-10-20 CM-9-7 Z-10-2

PRINTED IN U.S.A.

RATCHET TABLE FEED ASSEMBLY

INDEX NO.	CATALOG NO.	DESCRIPTION	UNITS PER ASS'Y
Ref.	090-429788	Table Feed Assembly	
1	090-429770	. Table Feed Bracket	1
2	091-980433	. Screw, Hex. Hd. Cap 3/8-16NC x 5/8	2
3	090-400615	. Table Feed Assembly	1
4	090-408253	. . Base Plate Assembly	1
5	090-200973	. . Rack Weldment	1
6	090-013434	. . Bracket	1
7	090-013491	. . Spring	1
8	090-013442	. . Center Pin	1
9	135-096139	. . Retaining Ring	2
10	090-013459	. . Gear	1
11	090-013327	. . Spacer Pin	1
12	090-013467	. . Thumb Lever	1
13	090-013319	. . Spacer Pin	2
14	090-013509	. . Spring	1
15	134-135086	. . Knob	1
16	091-993584	. . Washer, Lock 3/8 Shakeproof Int.	1
17	090-013426	. . Spacer	2
18	090-013475	. . Arm	2
19	091-334805	. . Shim	1
20	091-339713	. . Knob	1
21	091-988980	. . Screw, Rd. Hd. Mach. 1/4-20NC x 7/8	1
22	091-993568	. . Washer, Lock 1/4" Shakeproof Internal	1
23	090-055591	. . Washer, Flat	1
24	090-044173	. . Screw	1
25	091-334813	. . Shim	1

- 43-08303 .031 INSERT GAGE
- 43-08320 .025 INSERT GAGE
- 43-08307 .036 INSERT GAGE

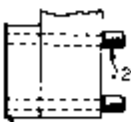


- GUIDE INSERT PACKS
- 1/16" TO 1/2" ... 4141
 - 1/16" TO 1" ... 4140

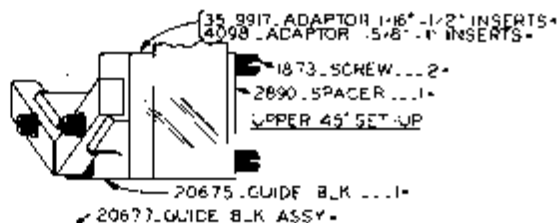
CARBIDE INSERTS

- 1/4" ... 16168
- 3/8" ... 16170
- 1/2" ... 13291
- 3/4" ... 13292
- 1" ... 8982

UPPER POST



35-99.7 ADAPTOR ... 1



35-99.7 ADAPTOR 1/16" - 1/2" INSERTS - 4098 ADAPTOR 5/8" - 1" INSERTS -

- 1873 SCREW ... 2
- 2890 SPACER ... 1

UPPER 45° SET-UP

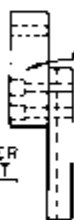
20675 GUIDE B.LK ... 1

20677 GUIDE B.LK ASSY

LOWER 45° SET-UP



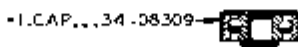
35-8991 ADAPTOR 1/16" - 1/2" INSERTS - 2113 ADAPTOR 5/8" - 1" INSERTS -



LOWER POST

35-1208 SCREW ... 2

34-08502 WASHER ... 1



34-08502 OBLIQUE BEARING

34-08304 CAP ... 1

34-08309 CAP ... 1



LOW SPEED



LOW SPEED

13-08002 5/8" TO 1" GUIDE BEARING ASSY 34-08009 1/16" TO 1/2" GUIDE BEARING ASSY

35-452 PLUG ... 1

35-455 SCREW ... 1

1 ELBOW ... 5-04520

35-452 EXP PLUG ... 1

35-451 SCREW ... 1

5-04520 ELBOW ... 1

1 ROLLER 25605

5880 SCREW ... 1

34-08008 OBLIQUE UPPER GUIDE 35-456 5/8" TO 1" UPPER GUIDE

35-453 1/16" TO 1/2" UPPER GUIDE

11520 1/2" UPPER GUIDE

11519 1/4" UPPER GUIDE

1 ROLLER 25604

1 ROLLER 27745

1 ROLLER 25605

5880 SCREW ... 1

35-453 1/16" TO 1/2" UPPER GUIDE

11520 1/2" UPPER GUIDE

11519 1/4" UPPER GUIDE

27759 ROLLER GUIDE [UPPER - 2"]

27758 ROLLER GUIDE [LOWER - 2"]

27759 ROLLER GUIDE [UPPER - 2"]

27758 ROLLER GUIDE [LOWER - 2"]

34-08008 OBLIQUE UPPER GUIDE 35-456 5/8" TO 1" UPPER GUIDE

35-453 1/16" TO 1/2" UPPER GUIDE

11520 1/2" UPPER GUIDE

11519 1/4" UPPER GUIDE

1 ROLLER 25604

1 ROLLER 27745

1 ROLLER 25605

5880 SCREW ... 1

35-453 1/16" TO 1/2" UPPER GUIDE

11520 1/2" UPPER GUIDE

11519 1/4" UPPER GUIDE

27759 ROLLER GUIDE [UPPER - 2"]

27758 ROLLER GUIDE [LOWER - 2"]

27759 ROLLER GUIDE [UPPER - 2"]

27758 ROLLER GUIDE [LOWER - 2"]

27759 ROLLER GUIDE [UPPER - 2"]

27758 ROLLER GUIDE [LOWER - 2"]

27759 ROLLER GUIDE [UPPER - 2"]

27758 ROLLER GUIDE [LOWER - 2"]

27759 ROLLER GUIDE [UPPER - 2"]

27758 ROLLER GUIDE [LOWER - 2"]

27759 ROLLER GUIDE [UPPER - 2"]

27758 ROLLER GUIDE [LOWER - 2"]

27759 ROLLER GUIDE [UPPER - 2"]

27758 ROLLER GUIDE [LOWER - 2"]

27759 ROLLER GUIDE [UPPER - 2"]

27758 ROLLER GUIDE [LOWER - 2"]

27759 ROLLER GUIDE [UPPER - 2"]

27758 ROLLER GUIDE [LOWER - 2"]

27759 ROLLER GUIDE [UPPER - 2"]

27758 ROLLER GUIDE [LOWER - 2"]

27759 ROLLER GUIDE [UPPER - 2"]

27758 ROLLER GUIDE [LOWER - 2"]

27759 ROLLER GUIDE [UPPER - 2"]

27758 ROLLER GUIDE [LOWER - 2"]

27759 ROLLER GUIDE [UPPER - 2"]

27758 ROLLER GUIDE [LOWER - 2"]

27759 ROLLER GUIDE [UPPER - 2"]

27758 ROLLER GUIDE [LOWER - 2"]



34-08003 OBLIQUE GUIDE ASSY 13-08006 5/8" TO 1" LOWER GUIDE

11543 3/4" LOWER GUIDE

34-08005 1/16" TO 1/2" LOWER GUIDE

1508 1/2" LOWER GUIDE

11507 1/4" LOWER GUIDE

11508 1/2" LOWER GUIDE

11507 1/4" LOWER GUIDE

11508 1/2" LOWER GUIDE

11507 1/4" LOWER GUIDE

11508 1/2" LOWER GUIDE

11507 1/4" LOWER GUIDE

11508 1/2" LOWER GUIDE

11507 1/4" LOWER GUIDE

11508 1/2" LOWER GUIDE

11507 1/4" LOWER GUIDE

11508 1/2" LOWER GUIDE

11507 1/4" LOWER GUIDE

11508 1/2" LOWER GUIDE

11507 1/4" LOWER GUIDE

11508 1/2" LOWER GUIDE

11507 1/4" LOWER GUIDE

11508 1/2" LOWER GUIDE

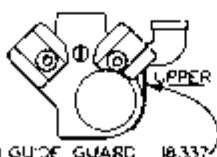
11507 1/4" LOWER GUIDE

11508 1/2" LOWER GUIDE

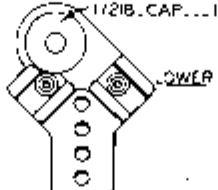
11507 1/4" LOWER GUIDE

11508 1/2" LOWER GUIDE

11507 1/4" LOWER GUIDE



1 GUIDE GUARD ... 18337



11218 CAP ... 1

UPPER

LOWER

27597 UPPER ANGLE 90° SAW BKT

27596 LOWER ANGLE 90° SAW BKT

18168 LOWER SAW GUIDE ASSY [3/4"]

17732 LOWER SAW GUIDE ASSY [1"]

18167 UPPER SAW GUIDE ASSY [3/4"]

17731 UPPER SAW GUIDE ASSY [1"]

NOTE:

* ALL STARRED ITEMS BEFORE SERIAL NOS

16-2 ... 123-58101

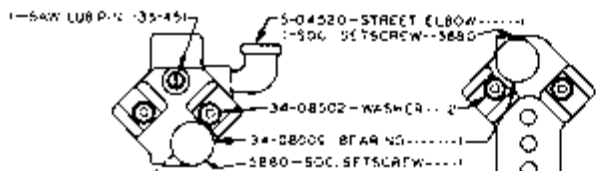
16-3 ... 24-58101

36-2 ... 25-58101

36-3 ... 126-58101

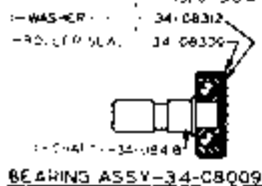
MODEL 16-2, 16-3, 36-2, 36-3
SAW GUIDES

PRECISION GUIDES



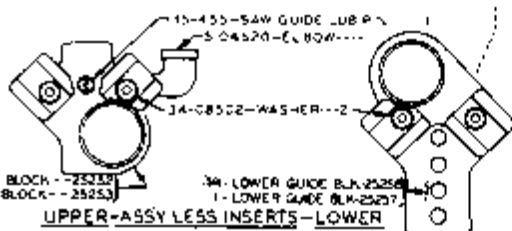
UPPER ASSY LESS INSERTS LOWER

15 9-1/16 TO 1/4" 1/16 TO 1/4" - 1507
1570-3/8" AND 1/2" 3/8" AND 1/2" - 1150A



BEARING ASSY-3-4-CB009

HEAVY DUTY GUIDES

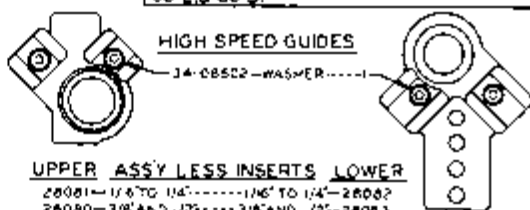


UPPER-ASSY LESS INSERTS-LOWER

1528-5/8" AND 3/4" 5/8" AND 3/4" - 1154D
1530 - 1154E

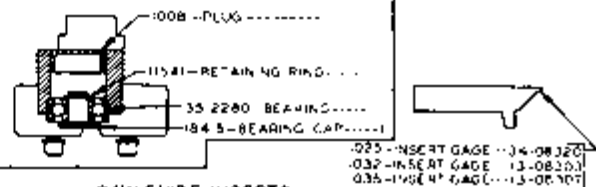
NOTE:
GUIDES SHOWN ON THIS PAGE WILL REPLACE
GUIDES AND SPACERS ON MODELS 26-2, 26-3,
60-2 & 60-3.

HIGH SPEED GUIDES



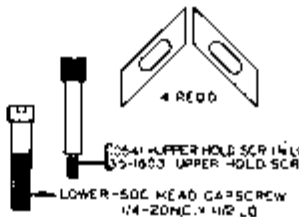
UPPER ASSY LESS INSERTS LOWER

28081-1/8 TO 1/4" 1/8 TO 1/4" - 28082
28080-3/8" AND 1/2" 3/8" AND 1/2" - 28083



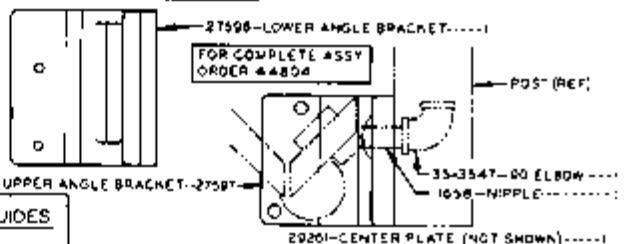
025-INSERT GAGE 3-4-CB120
032-INSERT GAGE 13-08201
035-INSERT GAGE 13-08202

SAW GUIDE INSERTS

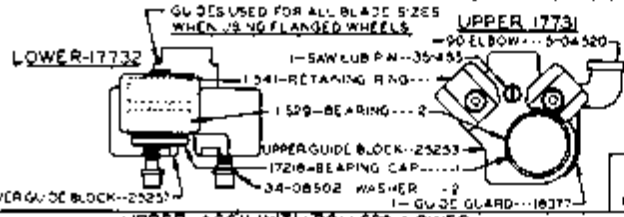


- 4499-1/8" INSERT
- 4498-3/8" INSERT
- 4497-1/2" INSERT
- 4456-3/8" INSERT
- 4495-1/4" INSERT
- 3960-3/8" INSERT
- 3929-1/2" INSERT
- 3958-3/8" INSERT
- 3957-3/4" INSERT
- 3956-1" INSERT
- 16188-1/4" CARBIDE INSERT
- 16170-3/8" CARBIDE INSERT
- 13281-1/2" CARBIDE INSERT
- 065894-5/8" CARBIDE INSERT
- 13282-3/4" CARBIDE INSERT
- 8982-1" CARBIDE INSERT

90° SAW GUIDE



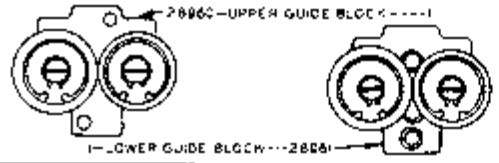
FOR COMPLETE ASSY
ORDER 44804



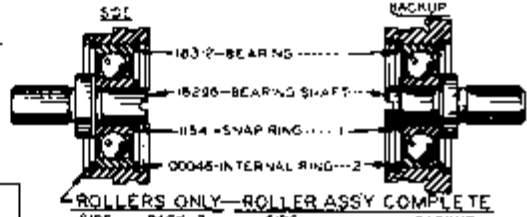
UPPER-ASSY WITH ROLLERS-LOWER

19250-1/4" 1/4" - 19257
29268-3/8" 3/8" - 29259
29505-1/2" 1/2" - 29505

ROLLER GUIDES

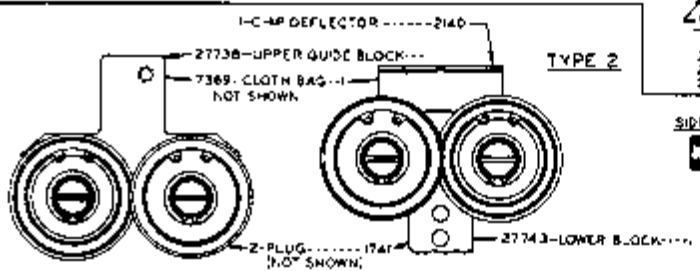


TYPE 1A

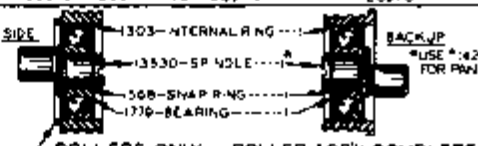


ROLLERS ONLY-ROLLER ASSY COMPLETE

SIDE	BACKUP	SIDE	BACKUP
28954	28963-3/4"	28984	28982
2896	28978-3/8"	28980	28978
28975	28977-1/2"	28974	28976



TYPE 2



ROLLERS ONLY-ROLLER ASSY COMPLETE

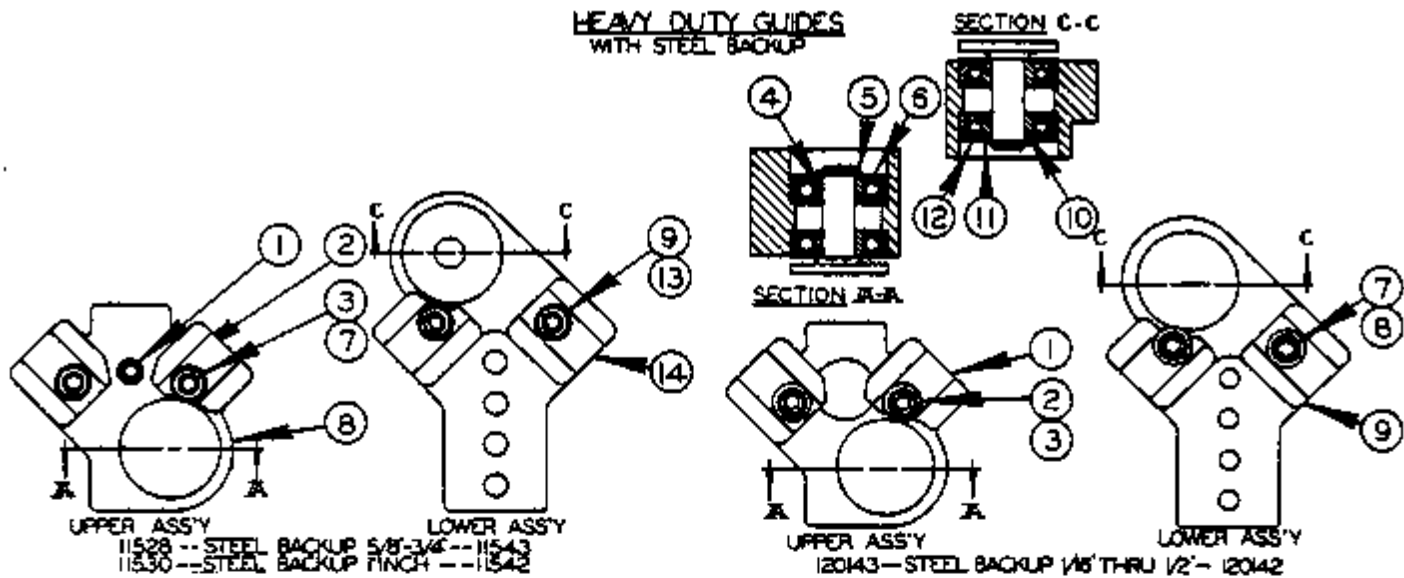
SIDE	BACKUP	SIDE	BACKUP
13531	13532	1/4"-20780	20798
13540	13541	3/8"-20407	20808
13533	13534	1/2"-20298	20295
13542	13543	5/8"-20797	21071
13535	13536	3/4"-20293	20298
100758	00759	1"-28997	28988

NOTE:
FOR MACHINES WITH FLANGED WHEELS USE 1" ROLLERS FOR THESE BLADES 1/4", 1/2", 3/4", 1"

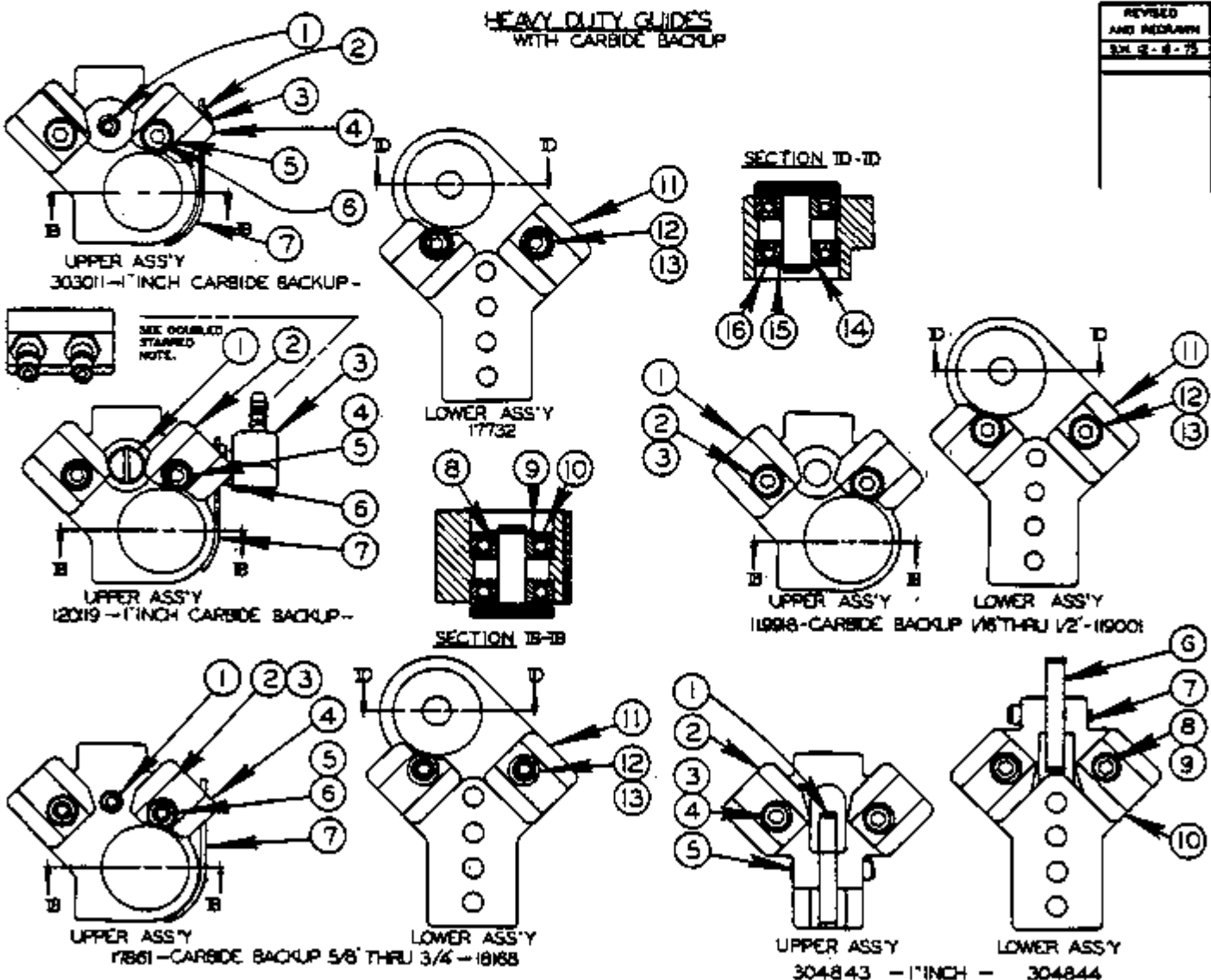
SAW GUIDES

FOR MODELS 613-2, 3813-2, 612-3, 3813-3

**HEAVY DUTY GUIDES
WITH STEEL BACKUP**



**HEAVY DUTY GUIDES
WITH CARBIDE BACKUP**



SAW GUIDE SELECTION

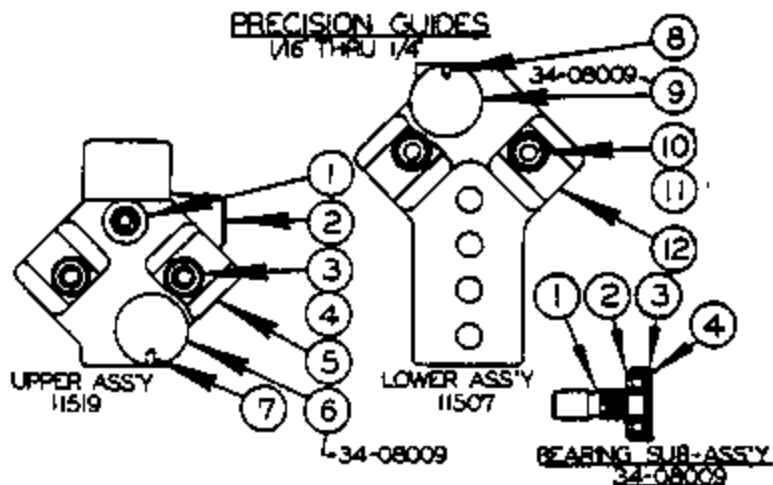
*121230

#121230
SAW GUIDE SELECTION

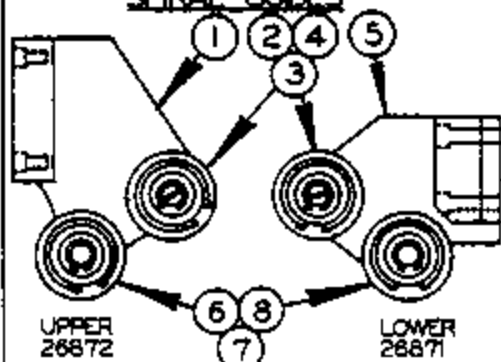
INDEX NO.	CATALOG NO.	DESCRIPTION	UNITS PER ASS'Y.	INDEX NO.	CATALOG NO.	DESCRIPTION	UNITS PER ASS'Y.
		HEAVY DUTY GUIDES (STEEL BACKUP)					
Ref.	091-201434	Upper Saw Guide Ass'y. (1/16" to 1/2")		15	090-115411	Retaining Ring	1
1	090-380767	Upper Saw Guide Block	1	16	090-115296	Bearing	2
2	091-982447	Screw, Soc. Hd. Cap 1/4-20NC x 1-1/4	2	Ref.	090-178617	Upper Saw Guide Ass'y. (5/8" to 3/4")	
3	134-083026	Washer	2	1	091-984450	Screw, Soc. Hd. Set 5/16-24NF x 1/2	1
4	090-115403	Bearing Cap	1	2	091-332023	Pipe Plug	1
5	090-115411	Retaining Ring	1	3	091-354415	Locknut	1
6	090-115296	Bearing	2	4	090-252529	Upper Saw Guide Block	1
Ref.	091-201426	Lower Saw Guide Ass'y. (1/16" to 1/2")		5	091-982421	Screw, Soc. Hd. Cap 1/4-20NC x 1	2
7	091-982447	Screw, Soc. Hd. Cap 1/4-20NC x 1-1/4	2	6	134-083026	Washer	2
8	134-083026	Washer	2	7	090-183377	Guide Guard	1
9	090-377383	Lower Saw Guide Block	1	8	090-172180	Bearing Cap	1
10	090-115403	Bearing Cap	1	9	090-115411	Retaining Ring	1
11	090-115411	Retaining Ring	1	10	090-115296	Bearing	2
12	090-115296	Bearing	2	Ref.	090-181686	Lower Saw Guide Ass'y. (5/8" to 3/4")	
Ref.	090-115288	Upper Saw Guide Ass'y. (5/8" to 3/4")		11	090-252586	Lower Saw Guide Block	1
Ref.	090-115304	Upper Saw Guide Ass'y. (1")		12	091-982421	Screw, Soc. Hd. Cap 1/4-20NC x 1	2
1	091-984450	Screw, Soc. Hd. Set 5/16-24NF x 1/2	1	13	134-083026	Washer	2
2	091-203695	Soc. Hd. Pipe Plug	1	14	090-172180	Bearing Cap	1
3	091-982421	Screw, Soc. Hd. Cap 1/4-20NC x 1 (5/8" to 3/4")	2	15	090-115411	Retaining Ring	1
	091-982447	Screw, Soc. Hd. Cap 1/4-20NC x 1-1/4 (1")	2	16	090-115296	Bearing	2
4	090-115403	Bearing Cap	1	Ref.	093-030112	Upper Saw Guide Ass'y. (1")	
5	090-115411	Retaining Ring	1	1	091-984450	Screw, Soc. Set 5/16-24NF x 1/2"	1
6	090-115296	Bearing	2	2	091-354415	Locknut	1
7	134-083026	Washer	2	3	091-332023	Pipe Plug	1
8	090-252529	Upper Saw Guide Block (5/8" to 3/4")	USE	4	090-252537	Upper Saw Guide Block	1
	090-252537	Upper Saw Guide Block (1")	ONE	5	134-083026	Washer	2
Ref.	090-115437	Lower Saw Guide Ass'y. (5/8" to 3/4")		6	091-982421	Screw, Soc. Hd. Cap 1/4-20NC x 1	2
Ref.	090-115429	Lower Saw Guide Ass'y. (1")		7	090-183377	Guide Guard	1
9	091-982421	Screw, Soc. Hd. Cap 1/4-20NC x 1 (5/8" to 3/4")	2	8	090-172180	Bearing Cap	1
	091-982447	Screw, Soc. Hd. Cap 1/4-20NC x 1-1/4 (1")	2	9	090-115411	Retaining Ring	1
10	090-115403	Bearing Cap	1	10	090-115296	Bearing	2
11	090-115411	Retaining Ring	1	Ref.	091-201194	Upper Saw Guide Ass'y. (1")	
12	090-115296	Bearing	2	1	090-333092	Coolant Nozzle	1
13	134-083026	Washer	2	2	090-336314	Upper Saw Guide Block	1
14	090-252586	Lower Saw Guide Block (5/8" to 3/4")	USE	3	091-081166	90° Barbed Insert	1
	090-252578	Lower Saw Guide Block (1")	ONE	4	091-982447	Screw, Soc. Hd. Cap 1/4-20NC x 1-1/4	2
				5	134-083026	Washer	2
				6	091-354415	Locknut	1
				7	090-183377	Guide Guard	1
				8	090-172180	Bearing Cap	1
				9	090-115411	Retaining Ring	1
				10	090-115296	Bearing	2
				Ref.	090-177320	Lower Saw Guide Block (1")	
				11	090-252578	Lower Saw Guide Block	1
				12	091-982447	Screw, Soc. Hd. Cap 1/4-20NC x 1-1/4	2
				13	134-083026	Washer	2
				14	090-172180	Bearing Cap	1
				15	090-115411	Retaining Ring	1
				16	090-115296	Bearing	2
				Ref.	093-048437	1 Inch Upper Saw Guide Block Sub-Assembly	
				1	091-212100	Back-Up Insert	1
				2	094-064300	Upper Saw Guide Block	1
				3	091-982447	Soc. Hd. Cap 1/4-20NC x 1-1/4	2
				4	134-083026	Washer	2
				5	091-402040	Pivot Bolt	1
				Ref.	093-048445	1 Inch Lower Saw Guide Block Sub-Assembly	
				6	091-212100	Back-Up Insert	1
				7	091-402040	Pivot Bolt	1
				8	091-982447	Soc. Hd. Cap 1/4-20NC x 1-1/4	2
				9	134-083026	Washer	2
				10	094-067683	Lower Saw Guide Block	1

**NOTE: If Your Machine Was Equipped With Two Coolant Lines to the Upper Saw Guide, Order Additional Parts 091-094524 Swivel Joint, Qty. 1, 090-160011 Barbed Insert Qty. 2 and Delere 091-081166 90° Barbed Insert, Qty. 1.

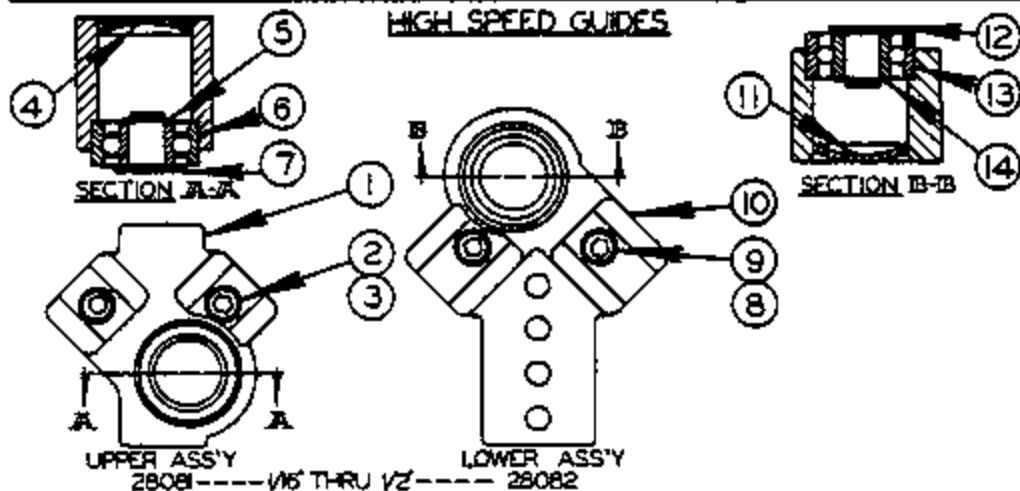
PRECISION GUIDES
1/16 THRU 1/4"



SPIRAL GUIDES

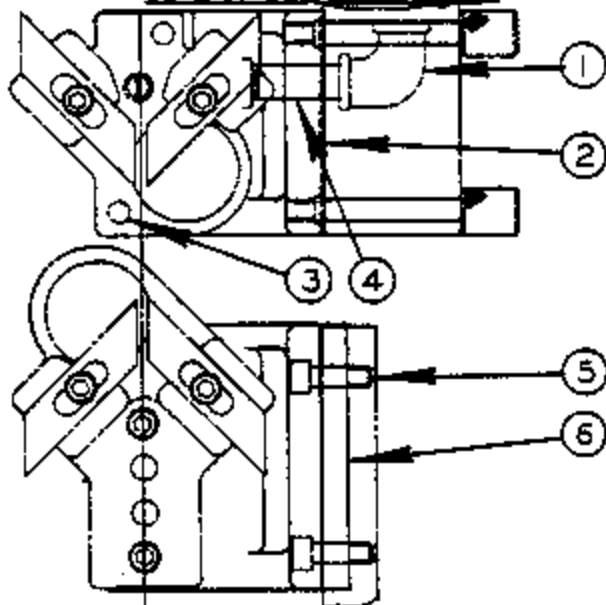


HIGH SPEED GUIDES



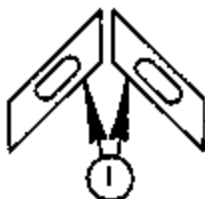
REVISED
AND REDRAWN
SK 12 - 17 - 75

90° SAW GUIDE BRACKETS



* 44804
ACCESSORY

**STEEL & CARBIDE
INSERT SELECTION**



INSERT GAGE

025 - 34-08320
032 - 13-08303
.035 - 13-08307

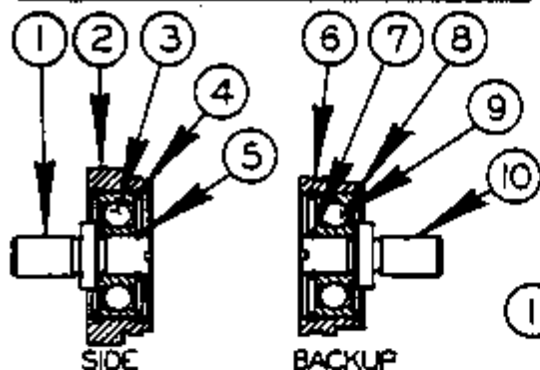
SAW GUIDE SELECTION
*121230

#121230

SAW GUIDE SELECTION

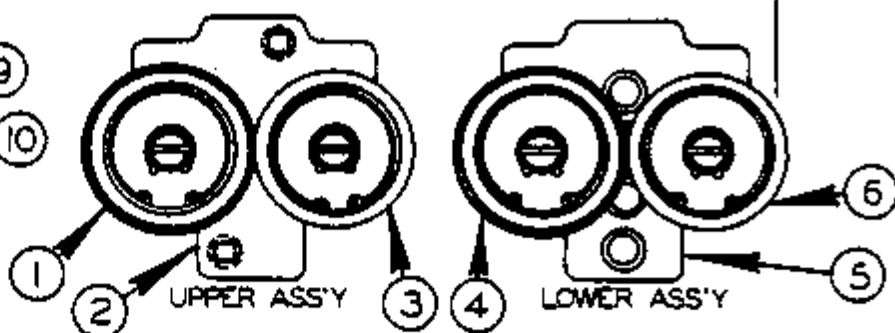
INDEX NO.	CATALOG NO.	DESCRIPTION	UNITS PER ASS'Y.	
PRECISION GUIDES				
Ref.	090-115197	Upper Saw Guide Assembly (1/16" to 1/4")		
1	091-984430	. Screw, Soc. Set 5/16-24NF x 1/2	1	
2	091-203695	. Soc. Hd. Pipe Plug	1	
3	091-982389	. Screw, Soc. Hd. Cap 1/4-20NC x 5/8	2	
4	134-085026	. Washer	2	
5	090-252495	. Upper Saw Guide Block	1	
6	134-080092	. Bearing Sub-Assembly (See Detail)	1	
7	091-985010	. Screw, Soc. Set #8-32NC x 1/4	1	
Ref.	090-115072	Lower Saw Guide Assembly (1/16" to 1/4")		
8	091-985010	. Screw, Soc. Set #8-32NC x 1/4	1	
9	134-080092	. Bearing Sub-Assembly (See Detail)	1	
10	091-982389	. Screw, Soc. Hd. Cap 1/4-20NC x 5/8	2	
11	134-085026	. Washer	2	
12	090-252479	. Lower, Saw Guide Block	1	
Ref.	134-080092	Bearing Sub-Assembly		
1	134-084185	. Shaft	1	
2	135-090439	. Bearing	1	
3	134-083096	. Roller Seal	1	
4	134-083120	. Washer	1	
SPIRAL GUIDES				
1	090-268723	Spiral Saw Guide Assembly (Upper)		
2	135-069532	. Eccentric Guide	1	
3	NA Alone	. Tire Only	1	
4	NA Alone	. Rim Only	1	
5	090-268715	Spiral Saw Guide Assembly (Lower)		
6	135-069524	. Plain Guide	1	
7	NA Alone	. Tire Only	1	
8	NA Alone	. Rim Only	1	
HIGH SPEED GUIDES				
Ref.	090-280819	Upper Saw Guide Assembly (1/16" to 1/2")		
1	090-279811	. Upper Saw Guide Block	1	
2	091-982389	. Screw, Soc. Hd. Cap 1/4-20NC x 5/8	2	
3	134-085026	. Washer	2	
4	091-373399	. Plug	1	
5	090-115411	. Retaining Ring	1	
6	135-022804	. Bearing	1	
7	090-184151	. Bearing Cap	1	
Ref.	090-282827	Lower Saw Guide Assembly (1/16" to 1/2")		
8	091-982389	. Screw, Soc. Hd. Cap 1/4-20NC x 5/8	2	
9	134-085026	. Washer	2	
10	090-279837	. Lower Saw Guide Block	1	
11	091-373399	. Plug	1	
12	090-184151	. Bearing Cap	1	
13	135-022804	. Ball Bearing	1	
14	090-115411	. Retaining Ring	1	
90° SAW GUIDE BRACKETS				
Ref.	090-448044	90° Saw Guide Assembly		
1	135-036473	. 90° Elbow	1	
2	090-275973	. Upper Angle Block	1	
3	091-982421	. Screw, Soc. Hd. Cap 1/4-20NC x 1	2	
4	090-116583	. Nipple	1	
5	091-982397	. Screw, Soc. Hd. Cap 1/4-20NC x 3/4	2	
6	090-275966	. Lower Angle Block	1	
	090-292616	. Center Plate 24 x 24 Table (Not Shown)	USE	
	093-021780	. Center Plate 30 x 30 Table (Not Shown)	ONE	
STEEL AND CARBIDE INSERT SELECTION				
1	Ref.	Steel Insert (4 Req'd)	Ref.	Carbide Insert (4 Req'd)
	090-044991	1/16"	090-161688	1/4"
	090-044983	3/32"	090-161704	3/8"
	090-044975	1/8"	090-132911	1/2"
	090-044967	3/16"	091-058941	5/8"
	090-044959	1/4"	090-132929	3/4"
	090-039603	3/8"	090-089822	1"
	090-039595	1/2"		
	090-039587	5/8"		
	090-039579	3/4"		
	090-039561	1"		

**TYPE I
ROLLER & SPINDLE ASSEMBLY**

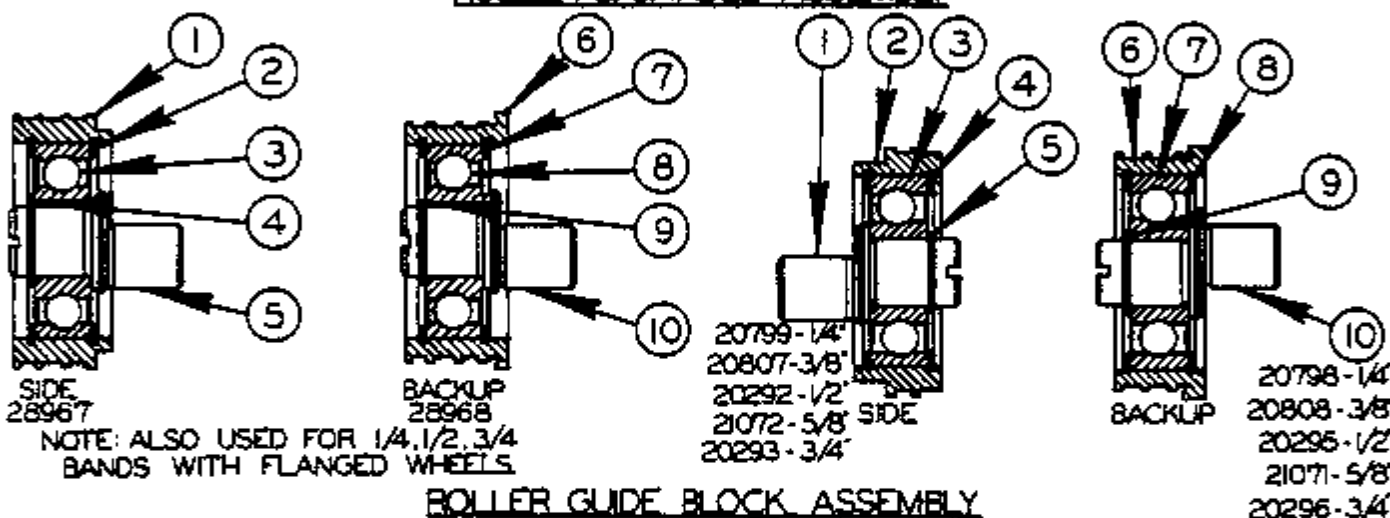


**TYPE IA
ROLLER SAW GUIDES W/ROLLERS**

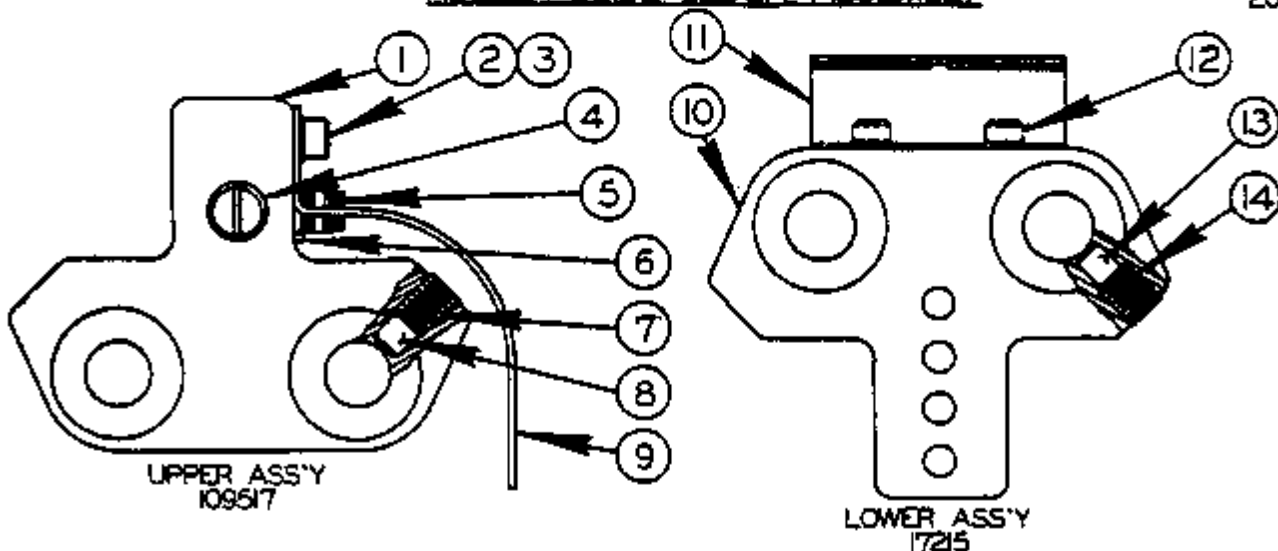
NEW DRG
REV 10-24-73
REVISIONS



**TYPE II
ROLLER & SPINDLE ASSEMBLY**



ROLLER GUIDE BLOCK ASSEMBLY



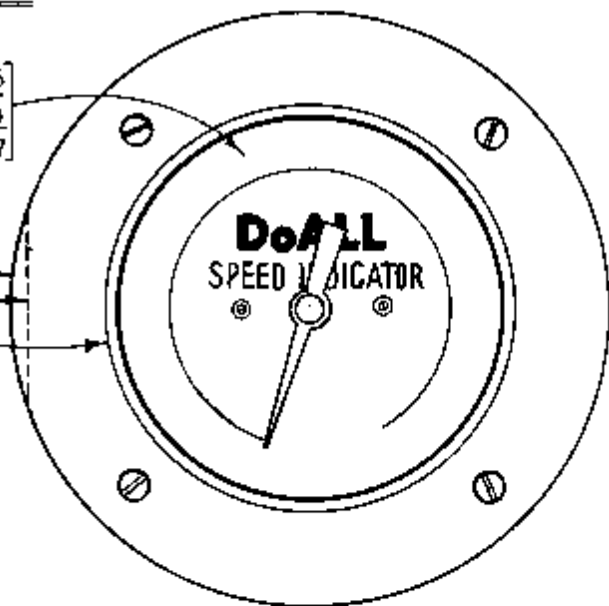
**121230
SAW GUIDE SELECTION**

SAW GUIDE SELECTION

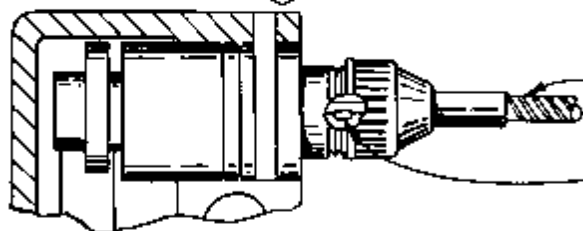
INDEX NO.	CATALOG NO.	DESCRIPTION	UNITS PER ASS'Y	INDEX NO.	CATALOG NO.	DESCRIPTION	UNITS PER ASS'Y
TYPE I - ROLLER AND SPINDLE ASSEMBLY							
REF.	090-289844	Roller Sub-Assembly 1/4" Side		REF.	090-289687	Backup Roller Guide Assembly	
REF.	090-289802	Roller Sub-Assembly 3/8" Side		6	091-007583	. Guide Roller 1"	1
REF.	090-289745	Roller Sub-Assembly 1/2" Side		7	090-013038	. Retaining Ring	2
1	090-182965	. Bearing Shaft	1	8	090-017799	. Bearing	1
2	090-289851	. Roller 1/4"	Use	9	090-015686	. Retaining Ring	1
	090-289810	. Roller 3/8"		10	090-135302	. Spindle	1
	090-289752	. Roller 1/2"	One	Ref.	090-207994	Guide Roller Ass'y 1/4" Side	
3	090-115296	. Bearing (N.D. Z99300XRIE) ...	1	Ref.	090-208075	Guide Roller Ass'y 3/8" Side	
4	091-000463	. Internal Ring	2	Ref.	090-202920	Guide Roller Ass'y 1/2" Side	
5	090-115411	. Snap Ring	1	Ref.	090-210725	Guide Roller Ass'y 5/8" Side	
REF.	090-289828	Flanged Roller Sub-Assembly 1/4" Backup		Ref.	090-202938	Guide Roller Ass'y 3/4" Side	
REF.	090-289786	Flanged Roller Sub-Assembly 3/8" Backup		1	090-135302	. Spindle	1
REF.	090-289760	Flanged Roller Sub-Assembly 1/2" Backup		2	090-135310	. Guide Roller 1/4"	Use
	090-289836	. Flanged Roller 1/4"	Use		090-135401	. Guide Roller 3/8"	
	090-289794	. Flanged Roller 3/8"			090-135336	. Guide Roller 1/2"	
	090-289778	. Flanged Roller 1/2"	One		090-135427	. Guide Roller 5/8"	
7	090-115411	. Snap Ring	1		090-135351	. Guide Roller 3/4"	One
8	091-000463	. Internal Ring	2	3	090-017799	. Bearing	1
9	090-115296	. Bearing (N.D. Z99300XRIE) ...	1	4	090-013038	. Retaining Ring	2
10	090-182965	. Bearing Shaft	1	5	090-015686	. Retaining Ring	1
TYPE IA - ROLLER SAW GUIDES WITH ROLLERS							
REF.	090-292566	Upper Roller Saw Guide Assembly 1/4"		Ref.	090-207986	Backup Roller Guide Ass'y 1/4"	
REF.	090-292582	Upper Roller Saw Guide Assembly 3/8"		Ref.	090-208083	Backup Roller Guide Ass'y 3/8"	
REF.	090-293064	Upper Roller Saw Guide Assembly 1/2"		Ref.	090-202953	Backup Roller Guide Ass'y 1/2"	
1	Ref.	Select flanged backup roller sub-assy from type I detail and parts list.		Ref.	090-210717	Backup Roller Guide Ass'y 5/8"	
2	090-289604	. Upper Saw Guide Block	1	Ref.	090-202961	Backup Roller Guide Ass'y 3/4"	
3	Ref.	Select side roller sub-assy from type I detail and parts list.		4	090-135328	. Backup Roller 1/4"	Use
	091-982397	. Scr., Soc. Hd. Cap 1/4-20NC x 3/4 (Not Shown)	2		090-135419	. Backup Roller 3/8"	
	091-993212	. Washer, Lock 1/4 Std. (Not Shown)	2		090-135344	. Backup Roller 1/2"	
REF.	090-292574	Lower Roller Saw Guide Ass'y 1/4"			090-135435	. Backup Roller 5/8"	
REF.	090-292590	Lower Roller Saw Guide Ass'y 3/8"			090-135369	. Backup Roller 3/4"	One
REF.	090-293056	Lower Roller Saw Guide Ass'y 1/2"		7	090-017799	. Bearing	1
4	Ref.	Select flanged backup roller sub-assy from type I detail and parts list.		8	090-013038	. Retaining Ring	2
5	090-289612	. Lower Saw Guide Block	1	9	090-015686	. Retaining Ring	1
6	Ref.	Select side roller sub-assy from type I detail and parts list.		10	090-135302	. Spindle	1
	091-982397	. Scr., Soc. Hd. Cap 1/4-20NC x 3/4 (Not Shown)	2	Ref.	091-095174	Roller Guide Block Assembly	
	091-993212	. Washer, Lock 1/4 Std.	2	1	090-335173	Upper Guide Sub-Assembly	
TYPE II - ROLLER AND SPINDLE ASSEMBLY							
REF.	090-289679	Side Roller Guide Assembly		2	091-982363	. Upper Guide Block	1
1	091-007583	. Guide Roller 1"	1		091-982363	. Scr., Soc. Hd. Cap 1/4-20NC x 1/2	1
2	090-013038	. Retaining Ring	2	3	091-993212	. Washer, Lock 1/4 Std.	1
J.	090-017799	. Bearing	1	4	090-335092	. Coolant Nozzle	1
4	090-015686	. Retaining Ring	1	5	114-145287	. Clamp Nipple	1
5	090-135302	. Spindle	1	6	107-0151045	. Hex. Pipe Nipple	1
				7	091-984484	. Scr., Soc. Hd. Set 3/8-16NC x 3/8	2
				8	090-017419	. Plug	2
				9	090-336363	. Coolant Guard	1
						. Cloth Bag (Not Shown)	1
				Ref.	090-172156	Lower Guide Sub-Assembly	
				10	090-277435	. Lower Guide Block	1
				11	090-021403	. Chip Deflector	1
				12	091-982355	. Scr., Soc. Hd. Cap 1/4-20NC x 3/8	2
				13	090-017419	. Plug	2
				14	091-984492	. Scr., Soc. Hd. Set 3/8-16NC x 1/2	2

TRANSMISSION SPEEDS	*1	*2	*3
SPEED INDICATOR			
16-2,16-3,36-2,36-3	27439	27438	21095
26-2,60-2	44769	44964	27519
26-3,60-3	44877	44877	44877

L.BEZEL 16-2,16-3 --- 17478
 L.BEZEL 36-2,36-3 --- 17556
 L.BEZEL --- 6-05402



TACHOMETER—SEE TRANSMISSION PAGE

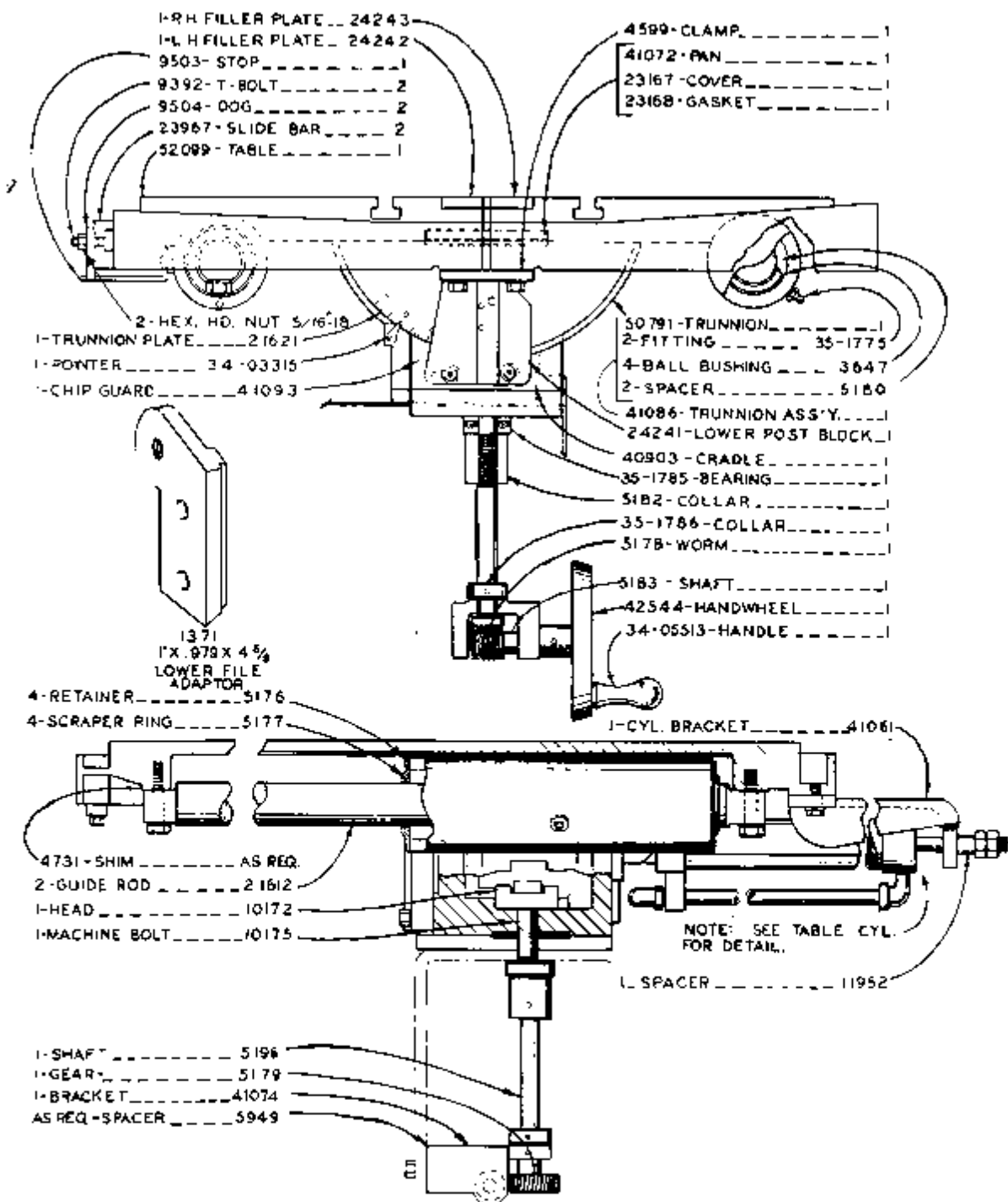


10210.CABLE ASSY. 36-3,36-2 _ |
 10211.CABLE ASSY. 26-3,16-3,16-2 _ |
 9497.CABLE ASSY. 60-2,60-3 _ |
 22040.CABLE ASSY. 26-2 _ |
 7832.KEY _ _ _ _ _ |

**NOTE:
 ORDER 7832_KEY
 WHEN ORDERING CABLES

MODEL	FIRST MACH.	LAST MACH.
16-2	123-58101	
16-3	124-58101	
36-2	125-58101	
36-3	126-58101	
26-2	127-58101	
26-3	128-58101	
60-2	129-58101	
60-3	130-58101	

SPEED INDICATOR ASSY.



MODELS 16-3 & 36-3
 TABLE & TRUNNION ASS'Y

MODEL	TABLE MACH	LAST MACH
16-3	124-58001	124-90324
36-3	124-58001	124-90331

- 1.COVER 2595
- 1.GASKET 2596
- 1.SHIFTER ARM 20425
- 1.PLUG 35-3419
- 1.SHIFT ROD 2266
- * 2.SPRING 2329
- * 2.BALL 5-03502
- * 2.LATCH 2588
- * 2.SPRING 11000

* NOTE: STARRED ITEMS ARE INCLUDED IN SHIFTER ASSEMBLY 40280

- 1.RETAINER 5026
- 1.GASKET 3872
- 1.OIL SEAL 2569
- 1.BEARING 5027
- 1.SHAFT ASSY 21290
- 1.CLUSTER GEAR 42974
- 1.SPACER 13-01304
- 1.BEARING 4581
- 1.SCREW 3508
- 1.CLUTCH JAW 3688
- 1.BUSHING 4575
- 1.CLUTCH JAW 3465
- * 1.SHIFTER ROD ASSY 20428

- * 1.SHIFT ROD CAGE 20388
- * 1.SHIFT ROD ASSY 20427
- 1.BEARING 2276
- 1.RETAINER 2265
- 1.OIL SEAL 2599
- 1.INPUT SHAFT 25998 (3611)

* NOTE: REPLACE MATING GEARS TOGETHER
REPLACE & OPOSEP

- 25-231 24648 & 42274
- 25-906 49572
- 24-036 25-23 2442 & 42975
- 42974 25-999 25-23 24648 & 42975
- 42975 24648 13442 & 25-23
- 12542 42975

NOTE:
REFER TO TRANS ASSY
51001 FOR 1 SPEED OR TO
TRANS ASSY 50437 FOR
2 SPEED PARTS LIST.

- 35-6068.BREATHER 1
- 4122.O'RING 1
- 50-93.HOUSING ASSY 1
- 20339.GASKET 1
- 2989.NIPPLE 1
- 1276.PIPE PLUG 1
- 14-348.ELBOW 1
- 1.SHAFT KNOB 34-13508
- 1.SHIFTER PLATE 42545
- 1.PIN 4076
- 2.RETG RING 35-5613
- 1.SHIFTER ROD 3925
- 1.PIVOT ARM 52-6
- 1.BALL CRANK 5220
- 1.SOCKET 35-8701
- 1.WASHER 5222
- 1.RETG RING 35-64261
- 1.BRACKET 41079

- 1.SHAFT 36-3 8526
- 1.SHAFT IG-3 5221
- 1.LOCK SECTOR 2165
- 1.LOCK ROD 5219
- 1.COIL SPRING 35-5470

- 2264.BEARING CAP 1
- 2263.GASKET 1
- 2275.BEARING 1
- 2277.RETAINING RING 1
- 25123.LINT GEAR SOT 1M
- 35-7192.KEY 2
- 2278.O'RING **
- 14-06553.BUSHING 1**
- 2280.SPINDLE 1**
- 2279.BODY 1**
- 2271.SPACER 1**
- 0540.GEAR 4T 1**M
- 42576.GEAR 85T 1M
- 2277.RETAINING RING 1
- 2276.BEARING 1
- 2264.BEARING CAP 1
- 24598.SHAFT 1M
- 2263.GASKET 2

- 1.SWIVEL BLOCK 21028
- 1.B880.BLOCK 36-3 1
- 1.21650.LOCK LEVER 1
- 1.5217.SPRING 1

* NOTE
STARRED ITEMS
ARE INCLUDED IN
TACHOMETER DRIVE
ASSY 11273

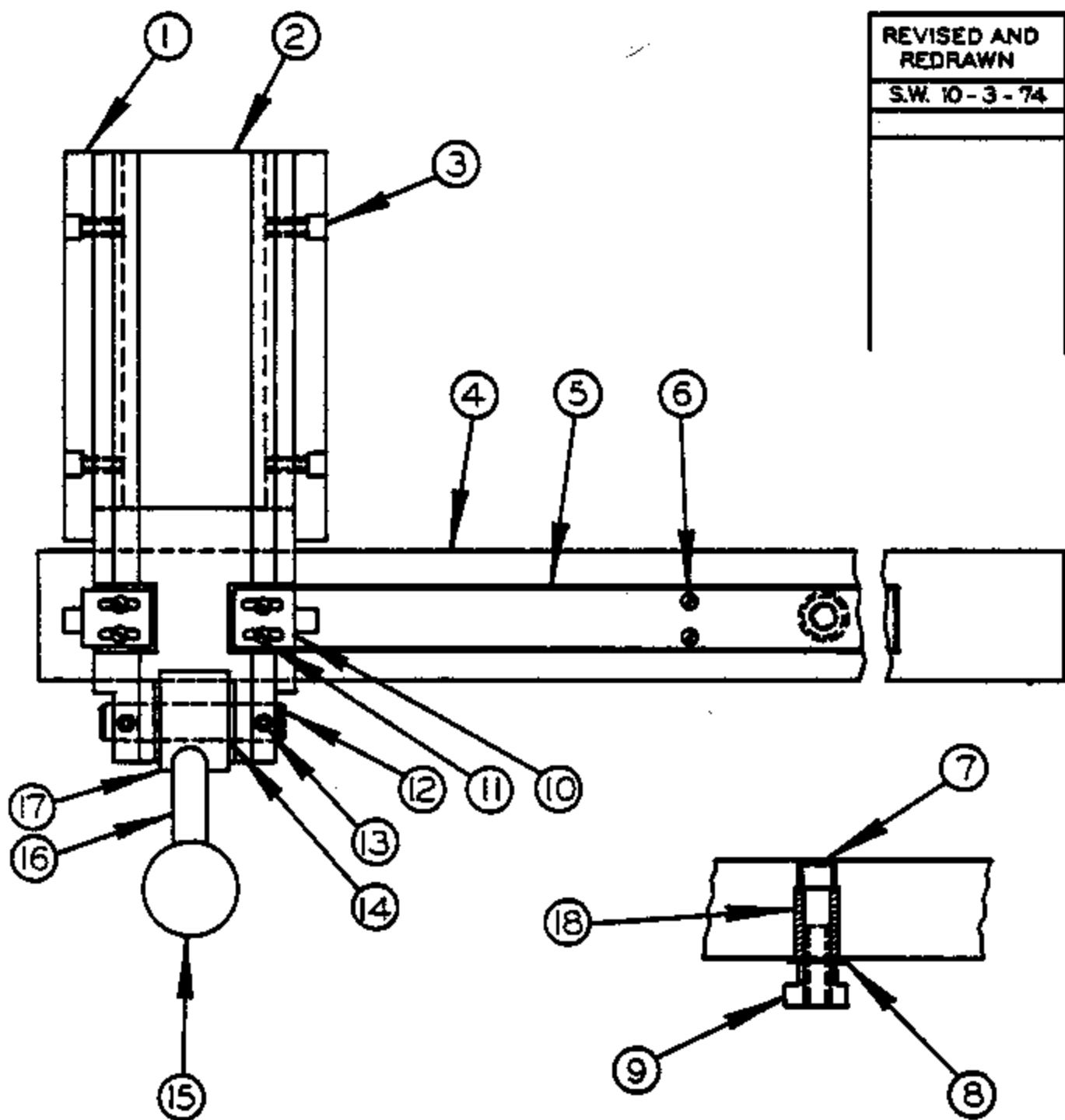
CODE	FIRST MACH	LAST MACH
6-2	123-5810	63-62295
6-24	71-5410	71-57999
36-2	25-5613	25-5613
36-24	85-54-01	85-57895
6-3	50-5310	50-56254
6-3	24-5640	24-62328
36-3	53-51-01	53-575-5
36-3	25-56-1	126-5025
36-2	27-56-1	127-5035
36-2	29-56-1	23-59924

3 SPEED 501BS
TRANSMISSION ASSEMBLY

PRINTED IN USA

REVISED AND
REDRAWN

S.W. 10-3-74

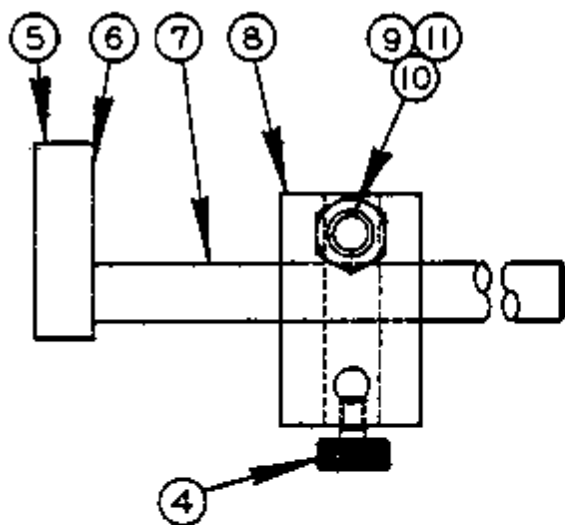


UNIVERSAL CAL. WORK FIXTURE
(USE WITH T-SLOT TABLE ONLY)

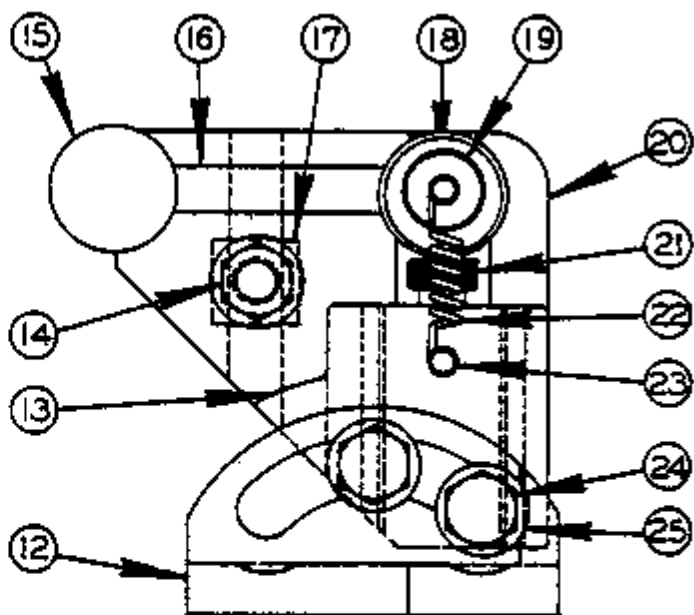
FITS ALL CONTOUR-
MATIC MACHINES

UNIVERSAL CALIBRATED WORK FIXTURE

INDEX NO.	CATALOG NO.	DESCRIPTION	UNITS PER ASS'Y
REF.	090-450842	Universal Calibrated Work Fixture (English) 26-3, 60-3, 2612-H, 2613-3, 2618-4, 6013-3, 6013-H3	
REF.	090-450834	Universal Calibrated Work Fixture (English) 16-2, 36-3, 1612-H, 1612-3, 2012-A, 2012-AT, 2012-IAT, 3612-H, 3612-3, 3612-1H, 3612-1, 3613-10	
REF.	094-049079	Universal Calibrated Work Fixture (Metric) 2012-A, 2012-AT, 2012-1A, 2012-1AT, 3612-1H, 3612-1, 3613-10	
REF.	094-048170	Universal Calibrated Work Fixture (Metric) 2612-H	
1	090-183906	. Wear Strip	2
2	090-450859	. Head	1
3	091-982363	. Screw, Soc. Hd. Cap 1/4-20NC x 1/2	4
4	090-450875	. Bar (Used on Ass'y #094-048170 & 090-450842)	1
	090-450867	. Bar (Used on Ass'y #094-049079 & #090-450834)	1
5	090-450891	. Scale (Used on Ass'y #090-450842)	USE
	090-450883	. Scale (Used on Ass'y #090-450834)	
	090-475005	. Scale (Used on Ass'y #094-049079)	
	090-474990	. Scale (Used on Ass'y #094-048170)	ONE
6	091-988337	. Screw, Rd. Hd. Mach. #5-40NC x 1/8	10
7	091-982819	. Screw, Soc. Hd. Cap 3/8-16NC x 1 1/2	USE
	091-982827	. Screw, Soc. Hd. Cap 3/8-16NC x 1 3/4	TWO
8	091-992644	. Washer, Flat 3/8 S.A.E.	2
9	090-038555	. T-Nut	2
10	090-183922	. Pointer	2
11	091-990051	. Screw, Truss Hd. Mach. #6-32NC x 1/4 Plated	4
12	090-183914	. Pin	1
13	091-984179	. Screw, Soc. Set #10-32NF x 1/4	2
14	090-288929	. Cam Assembly	1
15	134-135086	. Ball	1
16	090-025792	. . Handle	1
17	091-007021	. . Cam	1
18	091-011171	. Collar	1

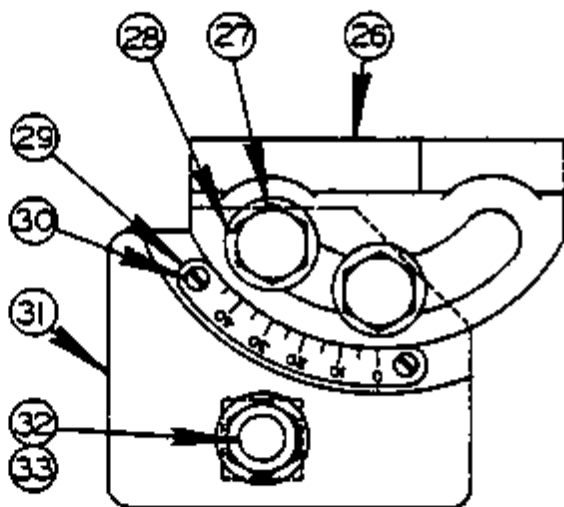
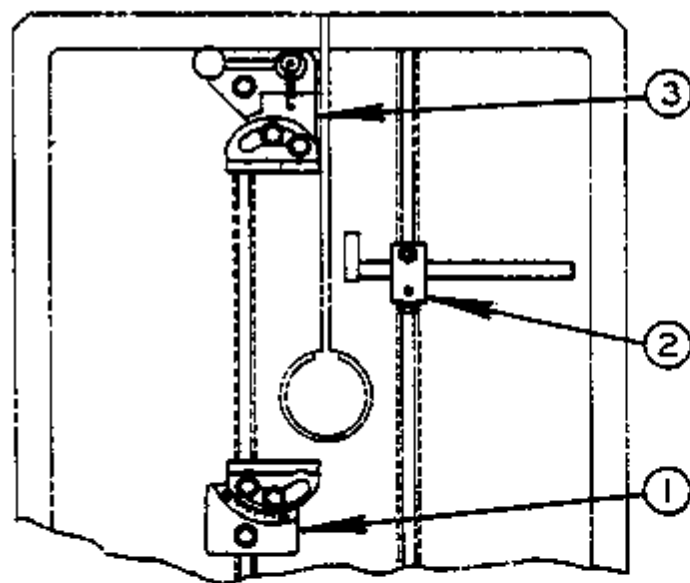


20453
CUTOFF GAUGE ASSEMBLY



40364
FRONT VISE ASSEMBLY

REVISED AND
REDESIGNED
ACT. 11-21-75



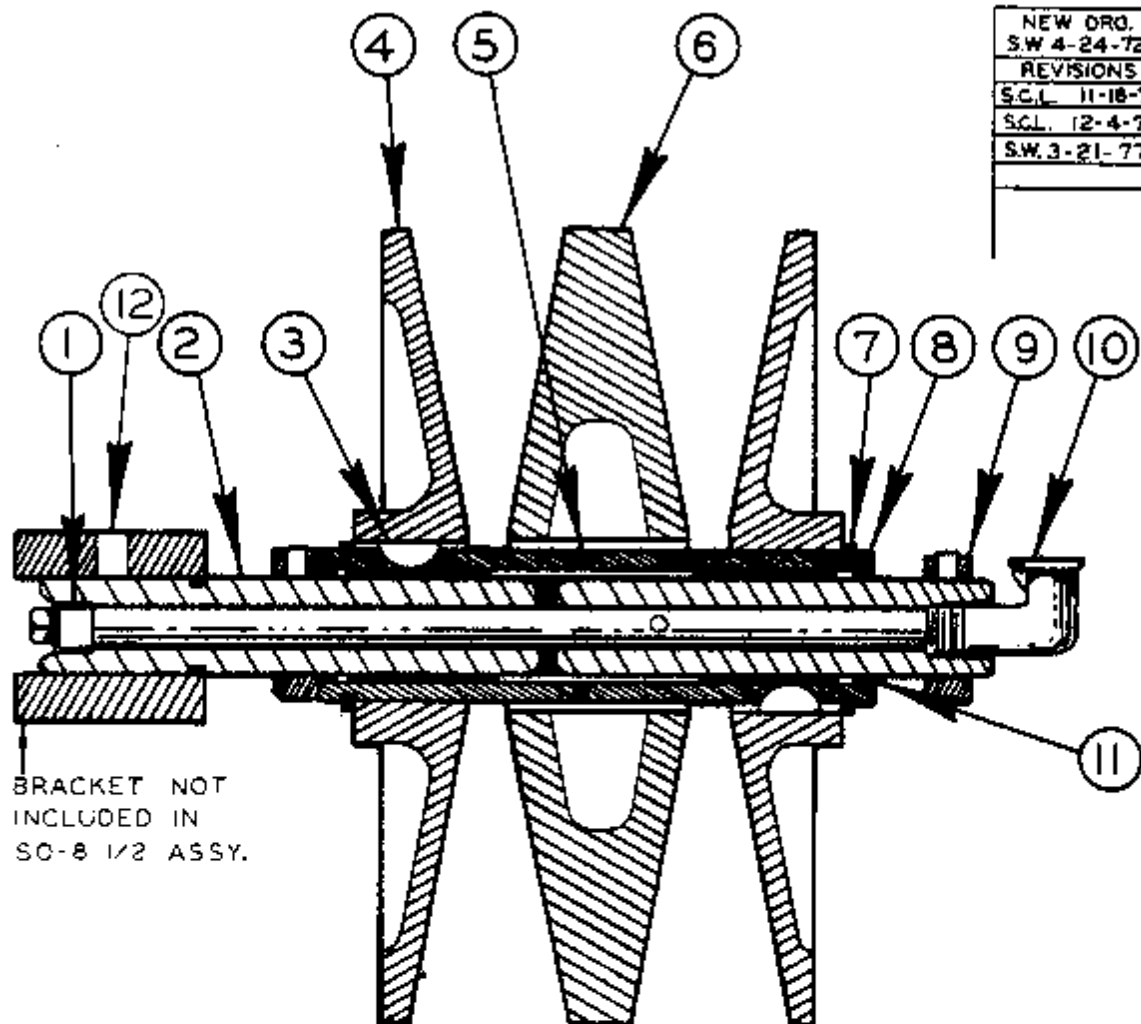
40365
REAR VISE ASSEMBLY

UNIVERSAL VISE ASSEMBLY

UNIVERSAL VISE ASSEMBLY

INDEX NO.	CATALOG NO.	DESCRIPTION	UNITS PER ASS'Y
REF.	090-403635	Universal Vise Assembly	
1	090-403650	. Rear Vise Assembly (See Below)	1
2	090-204538	. Cut Off Gauge Assembly (See Below)	1
3	090-403643	. Front Vise Assembly (See Below)	1
	090-025818	. Offset Socket Wrench (Not Shown)	1
REF.	090-204538	Cutoff Gauge Assembly	
4	135-005544	. Thumb Nut	1
5	090-204544	. Gauge Bar Assembly	1
6	090-023359	. . Head	1
7	090-023342	. . Pin	1
8	090-023367	. Body	1
9	090-025800	. T-Slot Bolt	1
10	090-033671	. Nut, Hex. 1/2-13NC	1
11	091-992669	. Washer 1/2 S.A.E. Std.	1
REF.	090-403643	Front Vise Assembly	
12	090-205618	. Jaw	1
13	090-205634	. Jaw Support	1
14	090-033671	. Nut, Hex. 1/2-13NC	1
15	134-135086	. Knob	1
16	090-205600	. Cam Assembly	1
17	090-025842	. T-Slot Bolt	1
18	091-984229	. Screw, Soc. Hd. Set 1/4-20NC x 1/4 Cup Pt.	3
19	090-025834	. Pivot Pin	1
20	090-205626	. Body	1
21	090-023227	. Adjusting Screw	1
22	090-025826	. Spring	1
23	090-023201	. Spring Stud	2
24	091-980664	. Screw, Hex. Hd. Cap 1/2-13NC x 1-1/4	2
25	091-992669	. Washer 1/2 S.A.E. Std.	3
REF.	090-403650	Rear Vise Assembly	
26	090-205592	. Jaw	1
27	091-980664	. Screw, Hex. Hd. Cap 1/2-13NC x 1 1/4	2
28	091-992669	. Washer 1/2 S.A.E. Std.	3
29	090-025768	. Escutcheon	1
30	091-988386	. Screw, Rd. Hd. Mach. #6-32NC x 1/4	2
31	090-205584	. Jaw and Body	1
32	090-093675	. T-Slot Bolt	1
33	090-033671	. Nut, Hex. 1/2-13NC	1

NEW DRG.
S.W. 4-24-72
REVISIONS
S.C.L. 11-18-73
S.C.L. 12-4-73
S.W. 3-21-77



BRACKET NOT INCLUDED IN SC-8 1/2 ASSY.

8 1/2 VARIABLE PULLEY ASSEMBLY

MODEL	FIRST MACH.	LAST MACH.
16-2	74-54101	
16-3	50-53101	
36-2	125-58101	
36-3	37-51101	
26-2	54-53101	
60-2	56-53101	
C-57	96-54101	
C-58	97-54101	
1613-2	150-59101	150-75855
3613-2	151-59101	151-758083
1612-3	152-59101	152-751144
3612-3	153-59101	153-781249
2612-1	172-60101	172-68229
2612-2H	206-62101	206-73347
2612-H	269-68101	269-68102
2612-1	285-68101	285-78200
2612-H	284-68101	284-78223
2013	301-71101	301-74165
2012-A	320-72101	320-74333
16-2A	75-54101	75-56221
36-2A	85-54101	85-58178
C-57	286-70101	286-78325
C-94V	297-70101	297-78194
2013-0	321-72101	321-74357
2013-1	338-74101	
2013-10	339-74101	
2012-1A	340-74101	
2012-1AT	341-74101	
2012-AT	330-74101	330-74111
2012-1H	348-75101	
2012-1H3	354-78101	
3612-1H3	358-78101	
C-121M	371-77101	
C-1212A	372-77101	
3612-1	380-77101	
3613-10	381-77101	
3612-1H	382-77101	

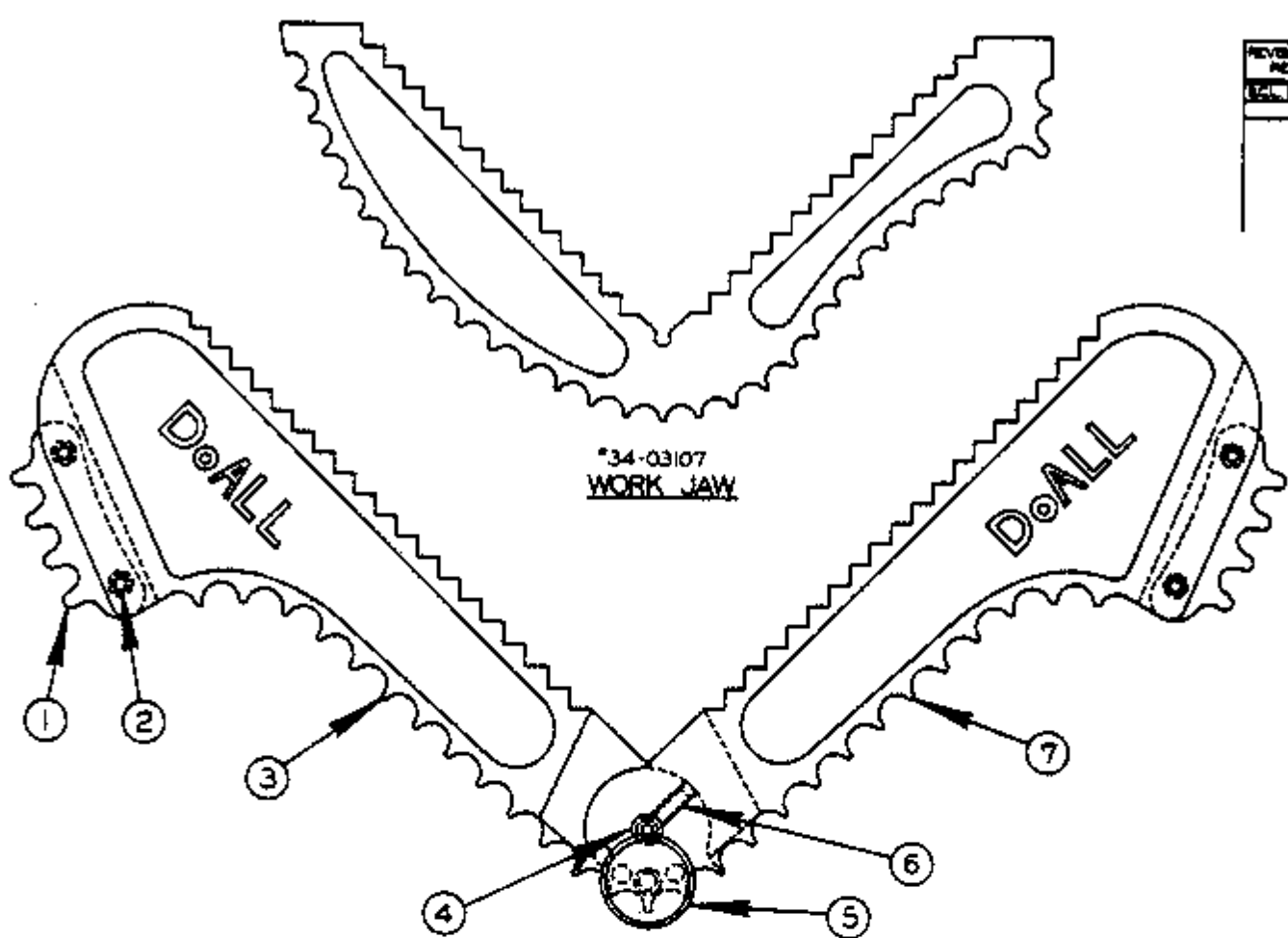
TO END

CODE NO. C-5-34

CM-5-12PS-4-35

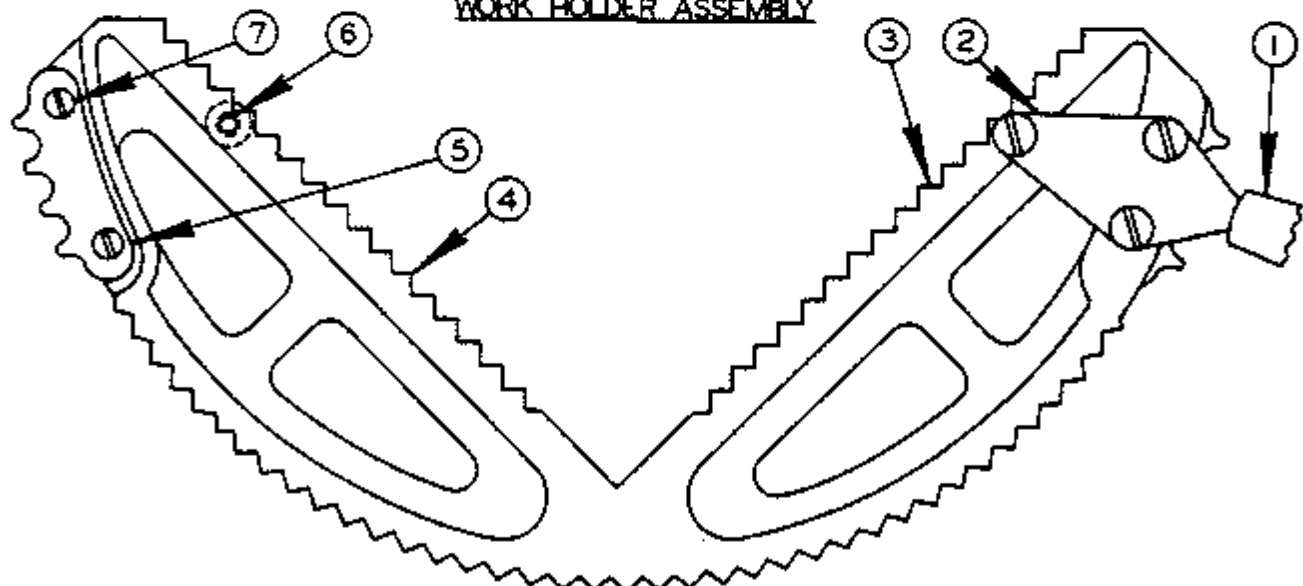
8- 1/2" VARIABLE ASSEMBLY

INDEX NO. REF.	CATALOG NO.	DESCRIPTION	UNITS PER ASS'Y
	135-093359	Variable Assembly	
1	091-227488	. Pipe Plug	1
2	135-093367	. Shaft	1
3	105-046023	. Key	2
4	135-093375	. End Sheave	2
5	091-007013	. Wick	2
6	090-202466	. Center Sheave Assembly	1
7	135-003275	. Retaining Ring	2
8	135-093391	. Sleeve Assembly	1
9	135-008126	. Collar	1
10	111-055125	. Oiler	1
11	135-008985	. Washer	2
12	091-984245	. Screw, Soc. Set 1/4-20NC x 3/8	1



*34-03107
WORK JAW

*40262
WORK HOLDER ASSEMBLY

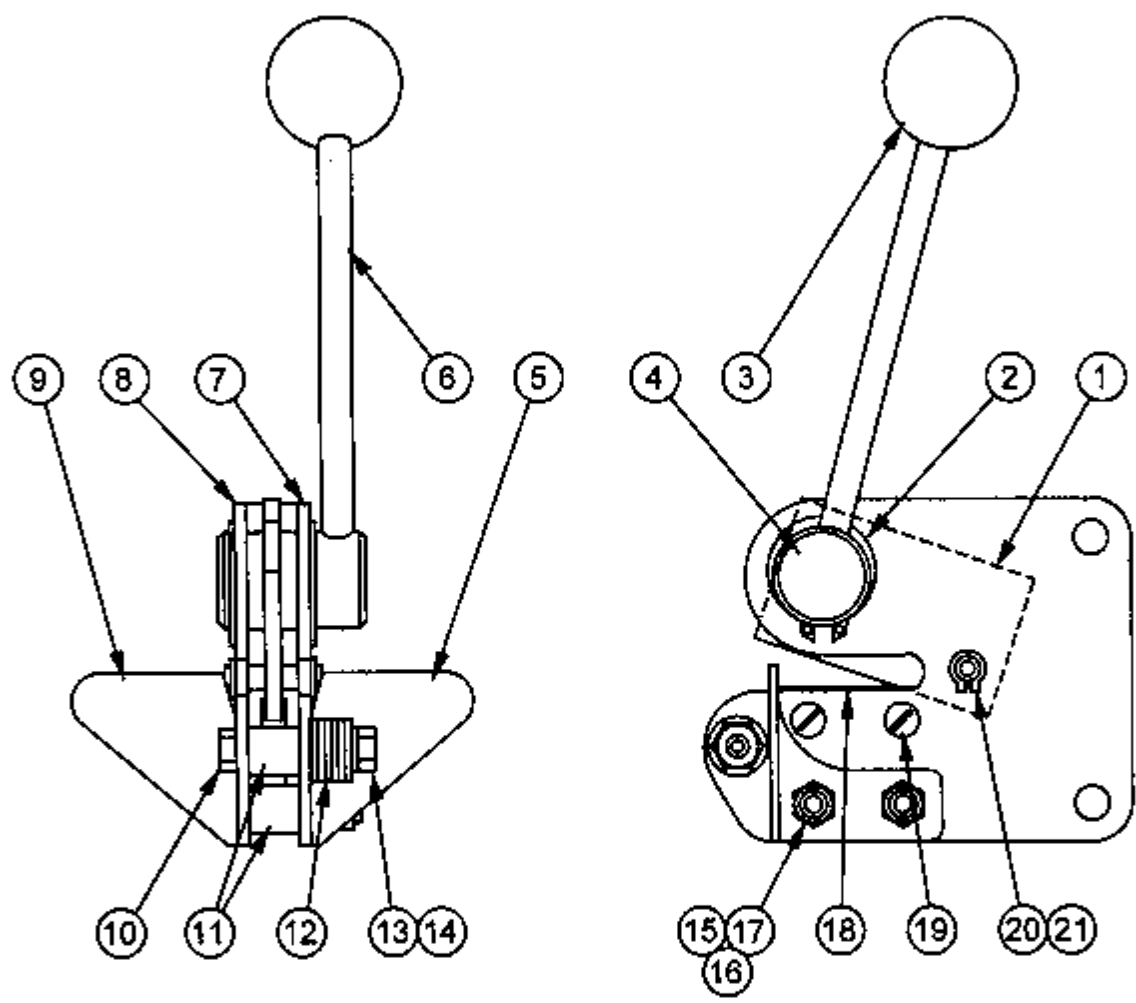


*5-13007
WORK HOLDING JAW ASSEMBLY

WORK HOLDING JAW

INDEX NO.	CATALOG NO.	DESCRIPTION	UNITS PER ASS'Y
REF.	134-031079	Work Jaw	
REF.	090-402629	Work Holder Assembly	
*1	105-133136	. Sprocket	2
2	091-986984	. Screw, Fil. Hd. Mach. #10-24NC x 1/2	4
3	090-203860	. Left Arm	1
4	091-982355	. Screw, Soc. Hd. Cap 1/4-20NC x 3/8	1
5	090-021627	. Knurled Screw	1
6	091-984104	. Screw, Soc. Hd. Set #10-24NC x 1/4	2
7	090-203852	. Right Arm	1
REF.	105-130074	Work Holding Jaw Assembly	
1	105-135123	. Handle	2
2	105-133185	. Handle Bracket	2
3	090-406786	. Work Holding Jaw Sub-Assembly	1
4	105-131106	. . Work Holding Jaw	1
*5	105-133136	. . Sprocket	2
6	091-988923	. . Screw, Rd. Hd. Mach. 1/4-20NC x 5/16	6
7	091-990150	. . Screw, Truss Hd. Mach. #10-24NC x 3/8	4

*NOTE: Before 2/12/44 On Hydraulic Machines Use #106-233372 Sprocket With 3/16" Pitch, Specify Pitch Of Chain When Ordering.



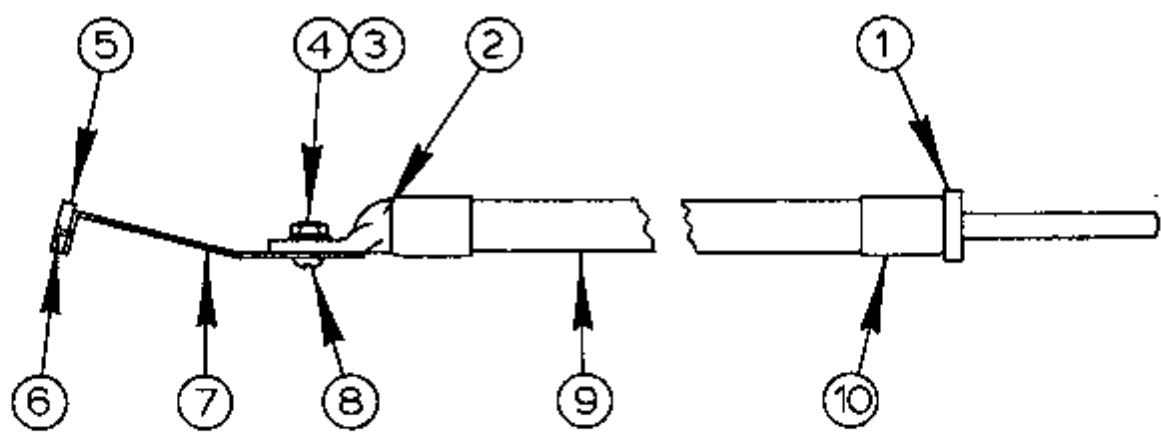
BLADE SHEAR ASSEMBLY

BLADE SHEAR ASSEMBLY

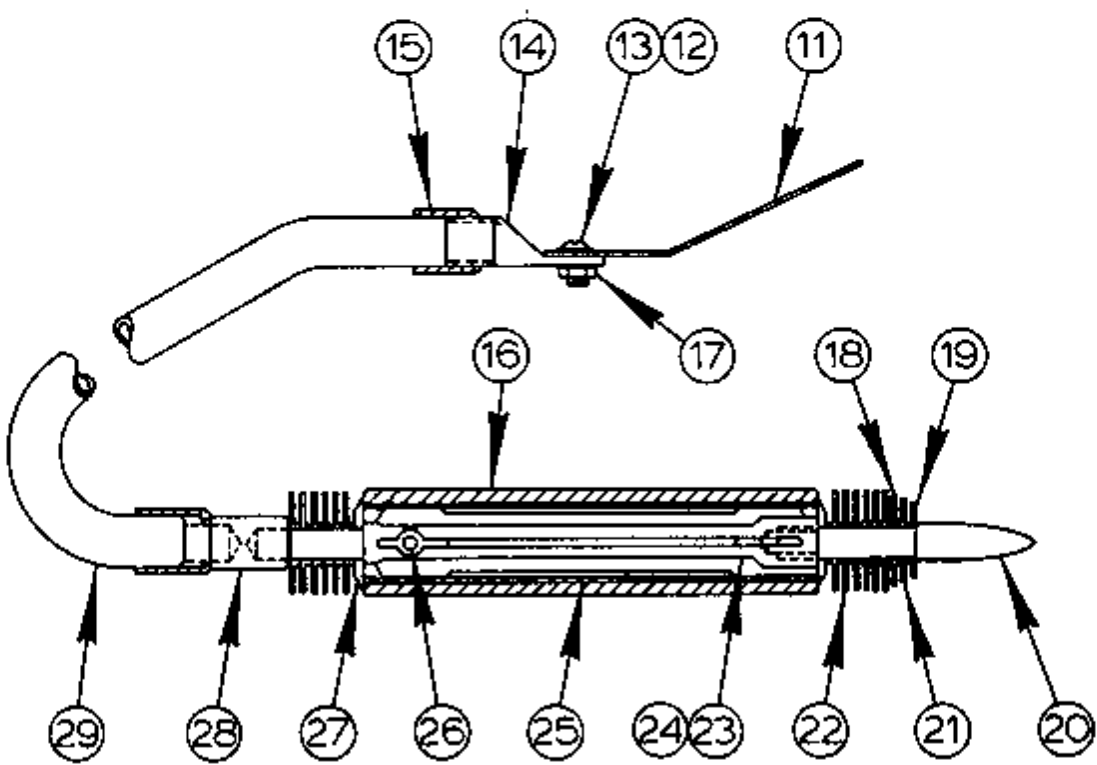
INDEX NO. Ref.	PART NO.	DESCRIPTION	UNITS PER ASSY.
1	091-318073	Blade Shear Assembly	
2	135-084374	. Knife	1
3	135-075588	. Retaining Ring	2
4	134-135086	. Knob	1
5	135-084416	. Eccentric	1
6	135-084465	. R.H. Square	1
7	135-084382	. Handle	1
8	135-084481	. R.H. Side Plate	1
9	135-084473	. L.H. Side Plate	1
10	135-084457	. L.H. Square	1
11	091-980128	. Screw, Hex. Hd. Cap 1/4-20NC x 1-1/2	1
12	091-000168	. Spacer	3
13	091-992610	. Washer, Flat 1/4 S.A.E. Std.	6
14	091-991158	. Nut, Hex. 1/4-20NC	1
15	091-993212	. Washer, Lock 1/4 Std.	1
16	091-980110	. Screw, Hex. Hd. Cap 1/4-20NC x 1-1/4	2
17	091-991158	. Nut, Hex. 1/4-20NC	2
18	091-993212	. Washer, Lock 1/4 Std.	2
19	091-000158	. Blade	2
20	091-988659	. Screw, Rd. Hd. Mach. #10-24NC x 1/4	4
21	135-084515	. Pin	1
	135-085827	. Retaining Ring	2

Following Not Shown and Used for Mounting. Select What Applies to Your Machine:

091-211276	. Nutsert 5/16-18NC.....	2
091-980276	. Screw, Hex. Hd. Cap 5/16-18NC x 3/4.....	2
091-993238	. Washer, Lock 5/16 Std.	2
091-467209	. Bracket	1
091-989061	. Screw, Rd. Hd. Mach. 5/16-18NC x 3/4	2



ETCHING PENCIL SHORT END ASSEMBLY



ETCHING PENCIL ASSEMBLY

ETCHING PENCIL ASSEMBLY

INDEX NO.	PART NO.	DESCRIPTION	UNITS PER ASS'Y
Ref.	113-070031	Etching Pencil Assembly	
*Ref.	135-051092	. Etching Pencil Short End Assembly.....	1
1	106-074206	. . Plug.....	1
2	090-195454	. . Terminal Lug.....	1
3	091-991091	. . Nut, Hex. Jam #8-32NC.....	1
4	091-992925	. . Washer, Flat #8-S Brass.....	1
5	113-073035	. . Welder Jaw Insulator.....	1
6	134-184076	. . File Rivet.....	2
7	113-073027	. . Terminal Strip.....	1
8	091-988527	. . Screw, Rd. Hd. Mach. #8-32NC x 5/16.....	1
9	091-359943	. . Cable.....	A.R.
10	090-021544	. . Ferrule.....	2
Ref.	113-070049	. Etching Pencil Assembly.....	1
11	113-073043	. . Terminal Strip.....	1
12	091-988527	. . Screw, Rd. Hd. Mach. #8-32NC x 5/16.....	1
13	091-992909	. . Washer, Flat #10-L Brass.....	1
14	090-195454	. . Terminal Lug.....	1
15	090-021544	. . Ferrule.....	2
16	106-075039	. . Tube.....	1
17	091-991091	. . Nut, Hex. Jam #8-32NC.....	1
18	106-073083	. . Fin.....	1
19	106-073109	. . Fin.....	1
20	106-074248	. . Point.....	1
21	106-073091	. . Fin.....	1
22	106-073075	. . Fin.....	12
23	135-050771	. . Etching Pencil Stem Assembly.....	1
24	106-072010	. . . Stem.....	1
25	106-074212	. . . Brass Tube.....	1
26	106-074255	. . . Pin.....	1
27	106-073117	. . Washer.....	2
28	106-074230	. . Connector.....	1
29	091-359943	. . Cable.....	A.R.

*NOTE: This Assembly Used For Butt welders With Ground Bushing On Panel Before 6-23-44.